

### PARTS

(1) Hardware

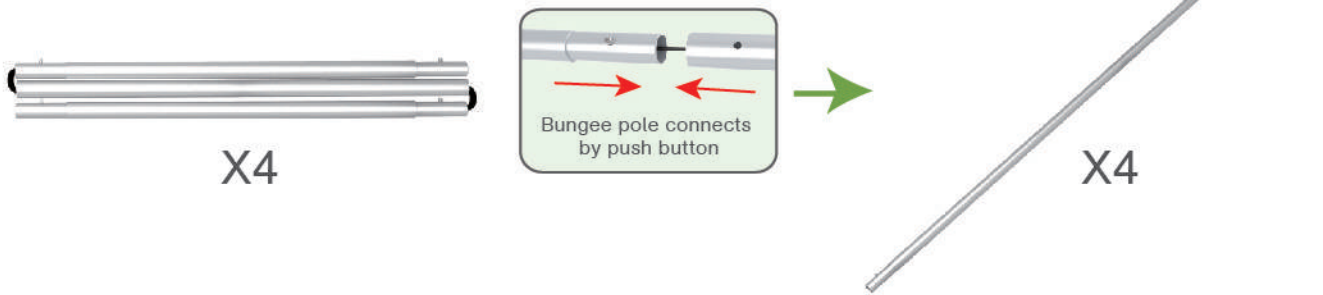


(2) Graphic printing fabric banner



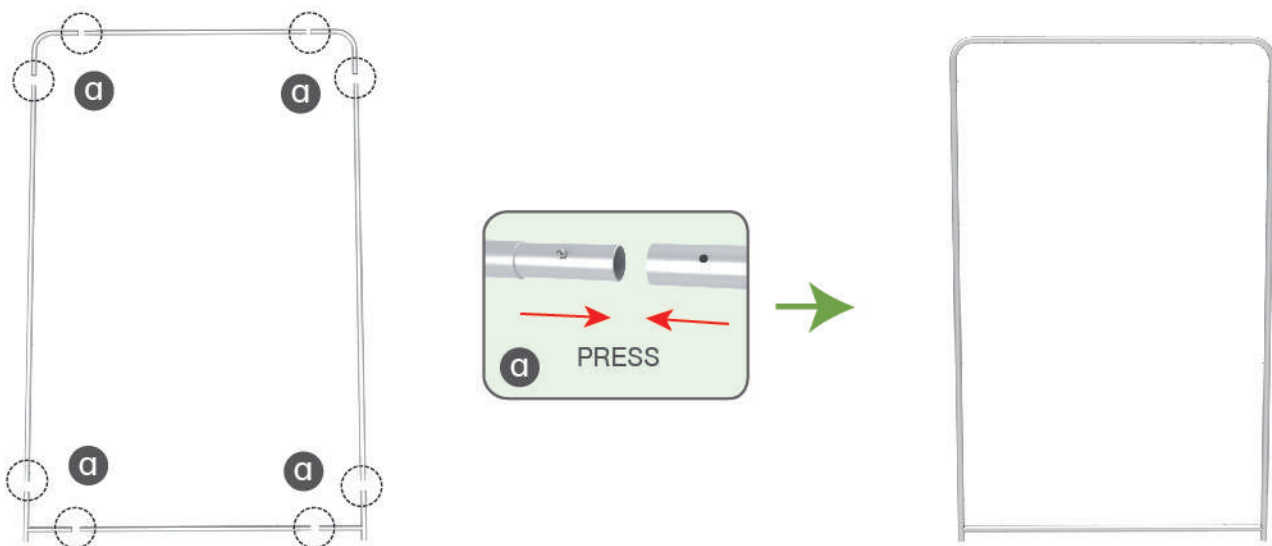
### STEP 01

To connect the poles according to the labellings



### STEP 02

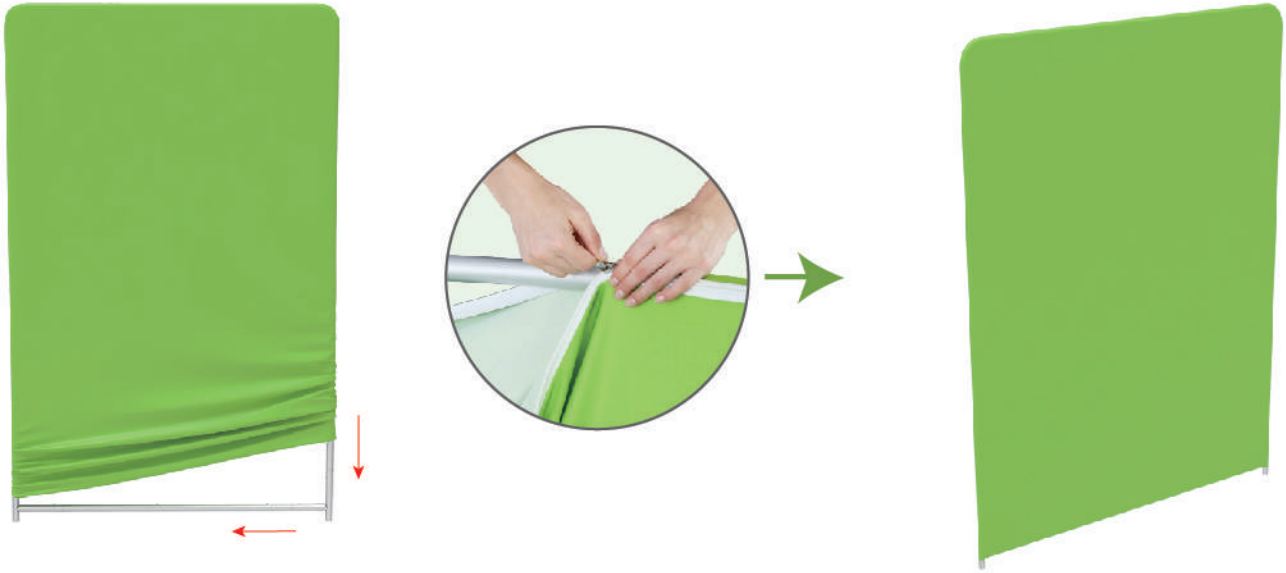
To use corner pieces to connect the poles to be display stand



### PARTS

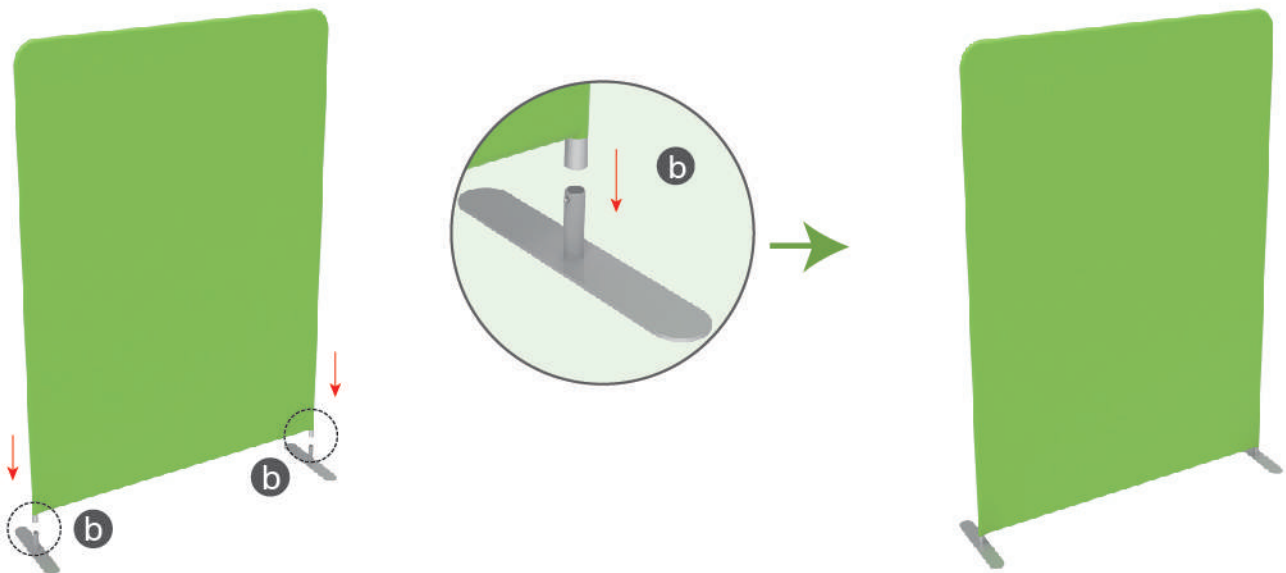
#### STEP 03

To slide the fabric banner on the frame from top and zip up at bottom



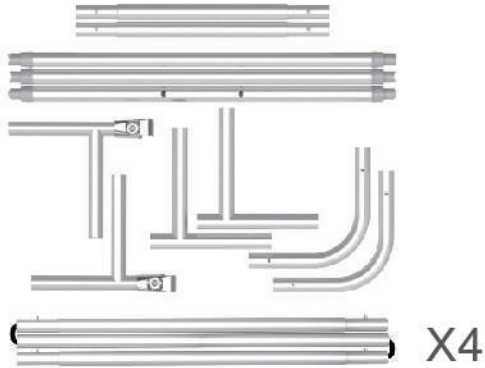
#### STEP 04

To assemble the stand feet in position



### PARTS

(1) Hardware

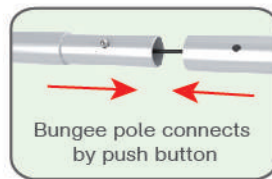


(2) Graphic printing fabric banner



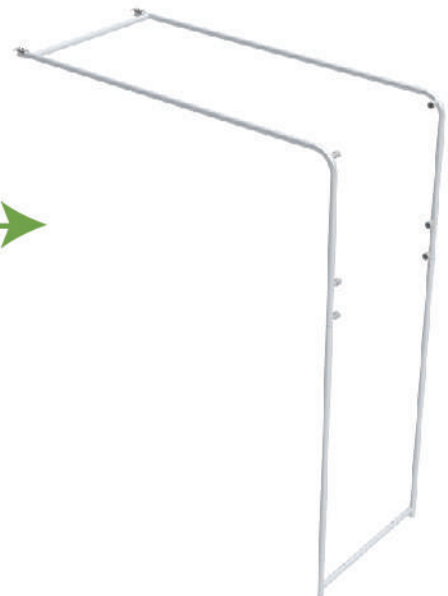
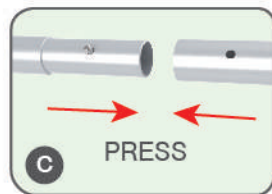
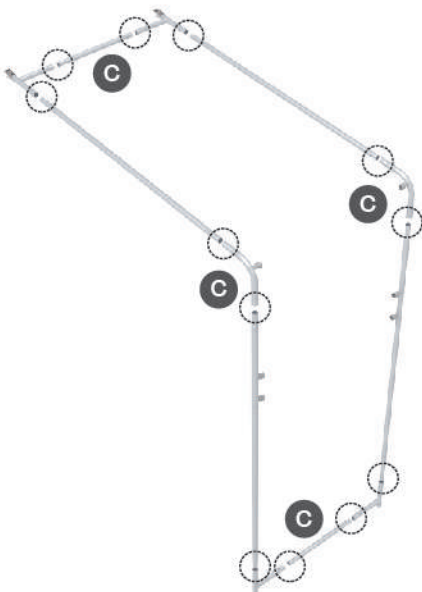
#### STEP 01

To connect the poles according to the labellings



#### STEP 02

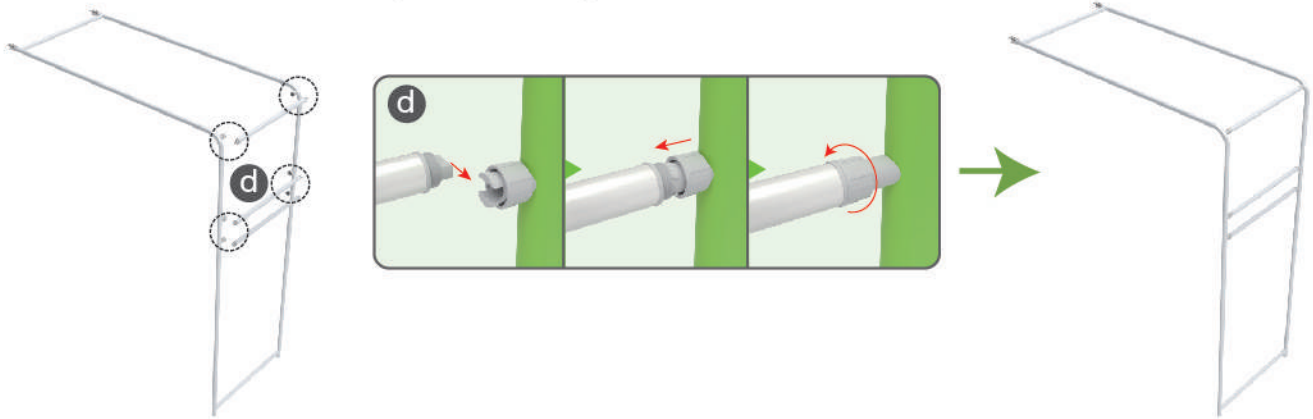
To use corner pieces to connect the poles to be display stand



### PARTS

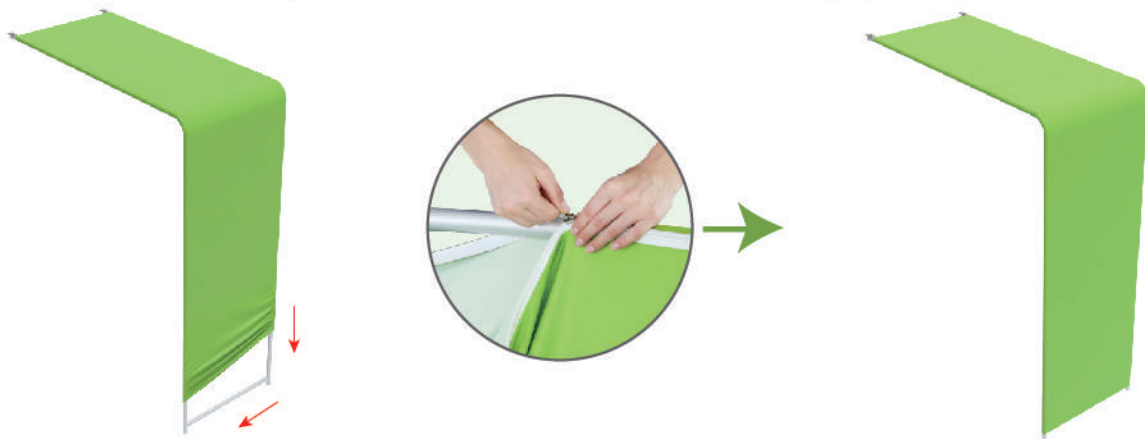
#### STEP 03

To install the cross bar according to the labellings



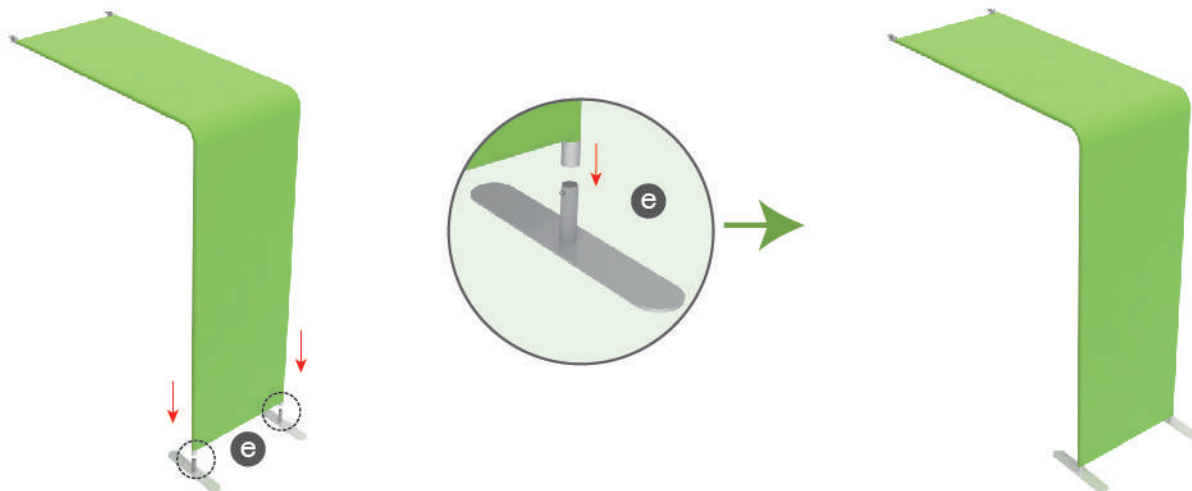
#### STEP 04

To lie down the stand and wrap the fabric banner from side to sides and zip up



#### STEP 05

To assemble the feet in position



## PARTS

(1) Hardware

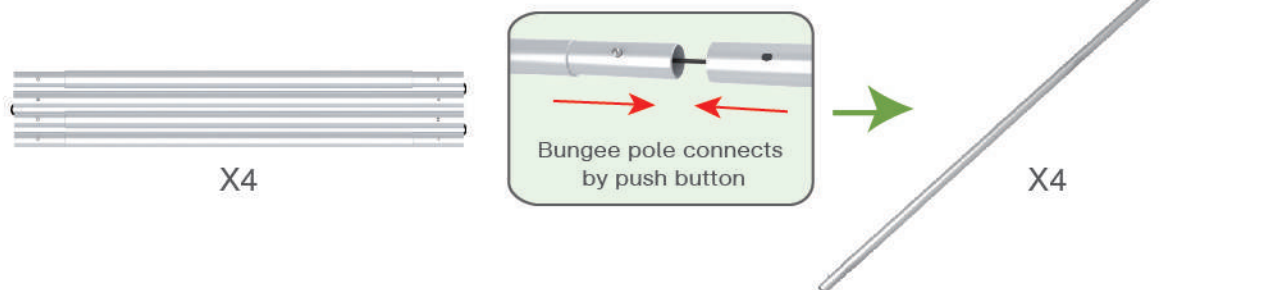


(2) Graphic printing fabric banner



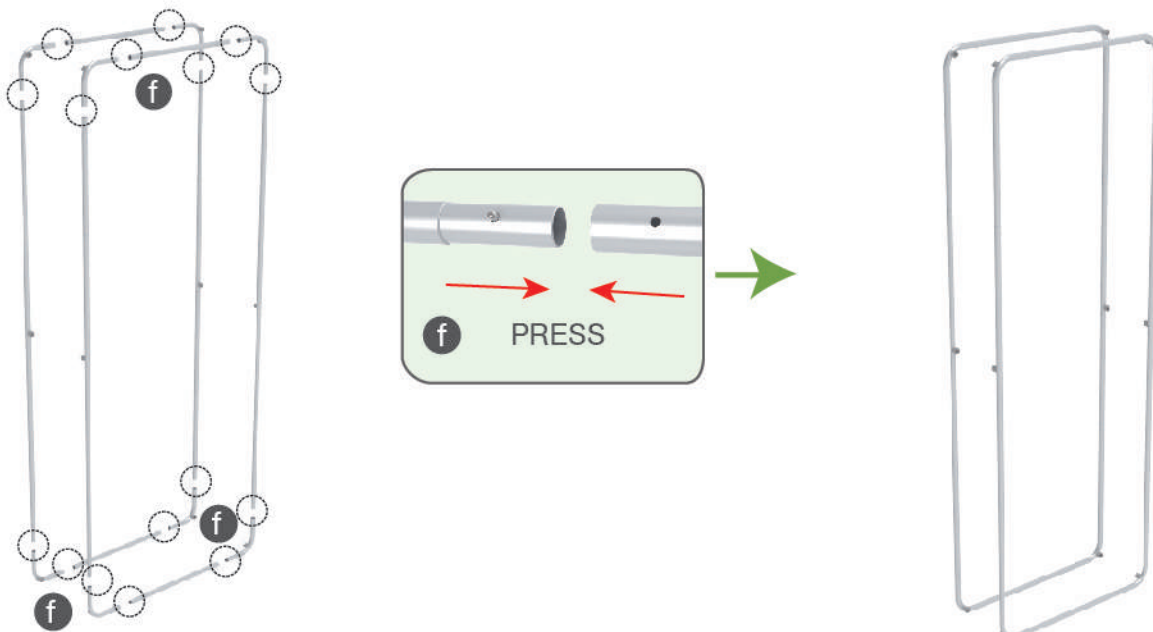
## STEP 01

To connect the poles according to the labellings



## STEP 02

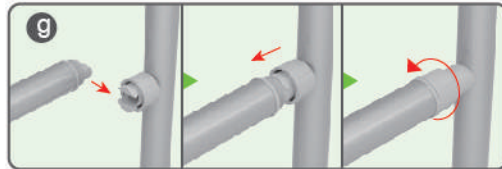
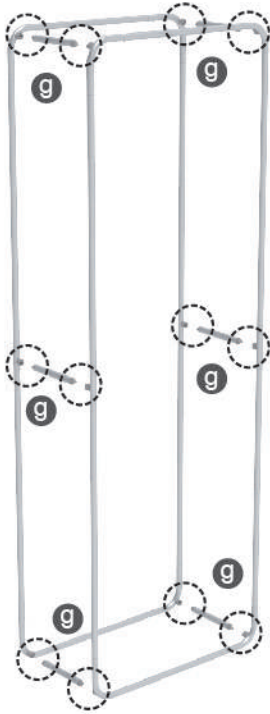
To use corner pieces to connect the poles to be display stand



### PARTS

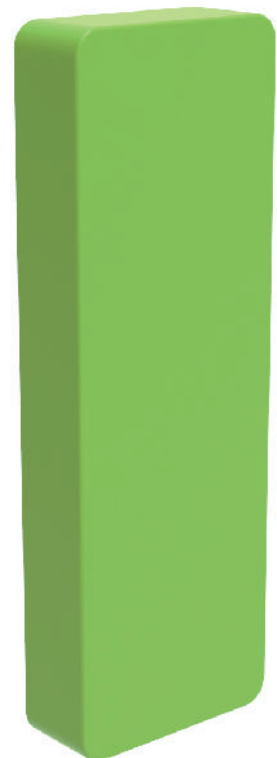
#### STEP 03

To install the cross bar according to the labellings



#### STEP 04

To lie down the stand and wrap the fabric banner from side to sides and zip up



### PARTS

(1) Hardware

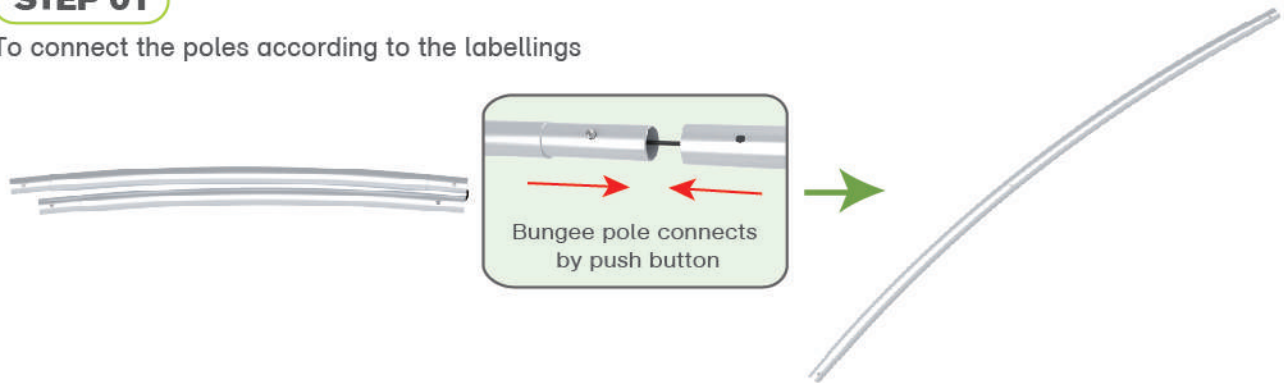


(2) Graphic printing fabric banner



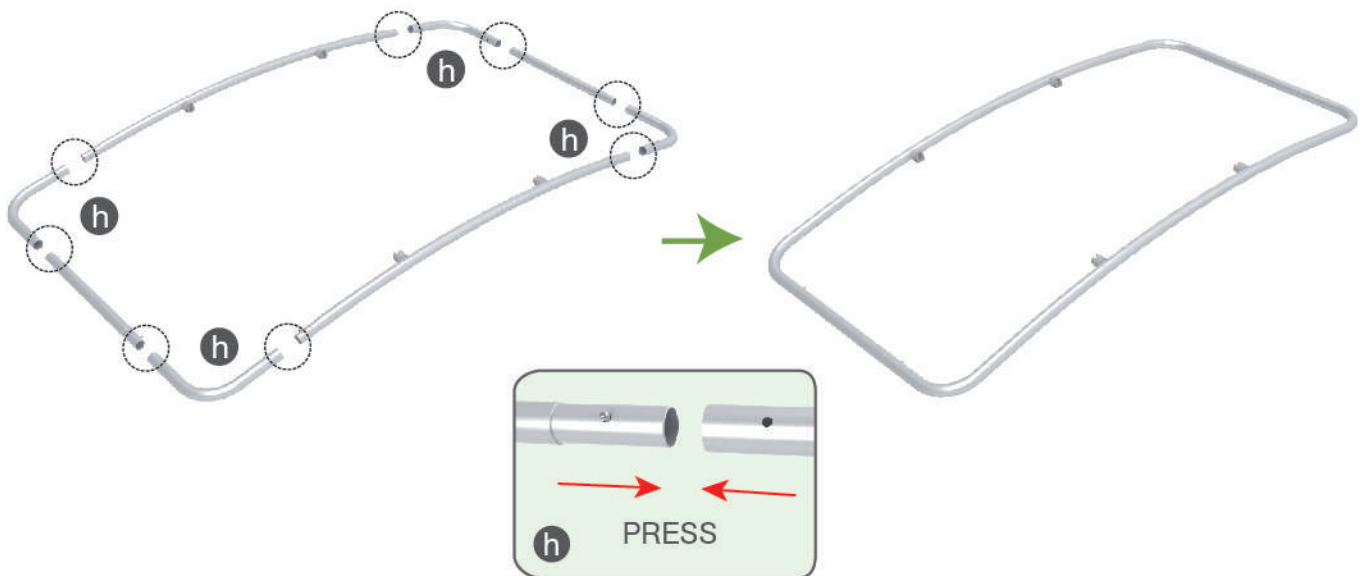
### STEP 01

To connect the poles according to the labellings



### STEP 02

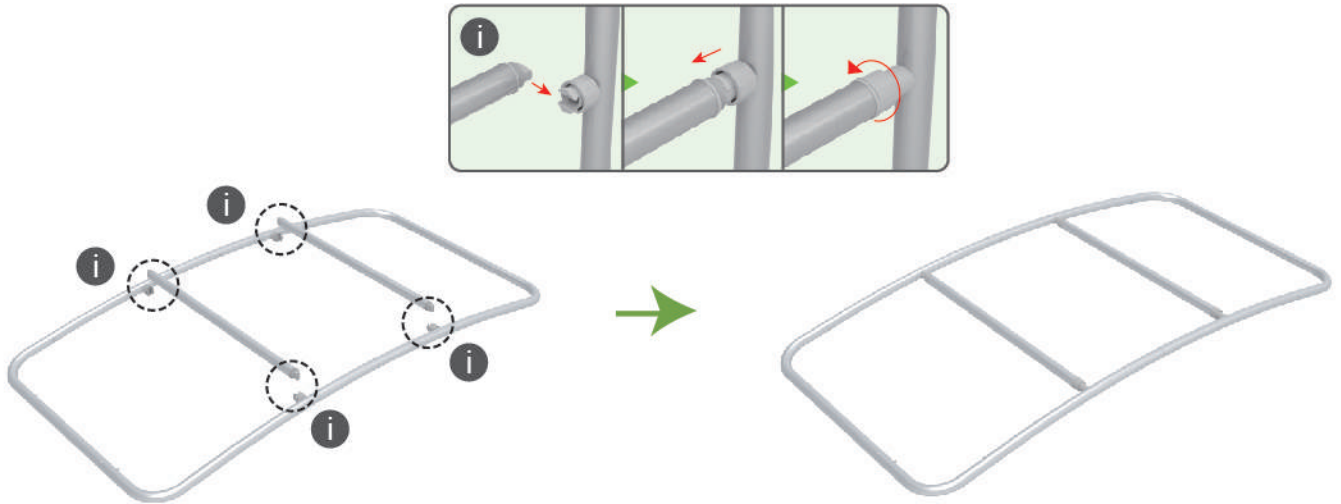
To use corner pieces to connect the poles to be display stand



### PARTS

#### STEP 03

To install the cross bar according to the labellings



#### STEP 04

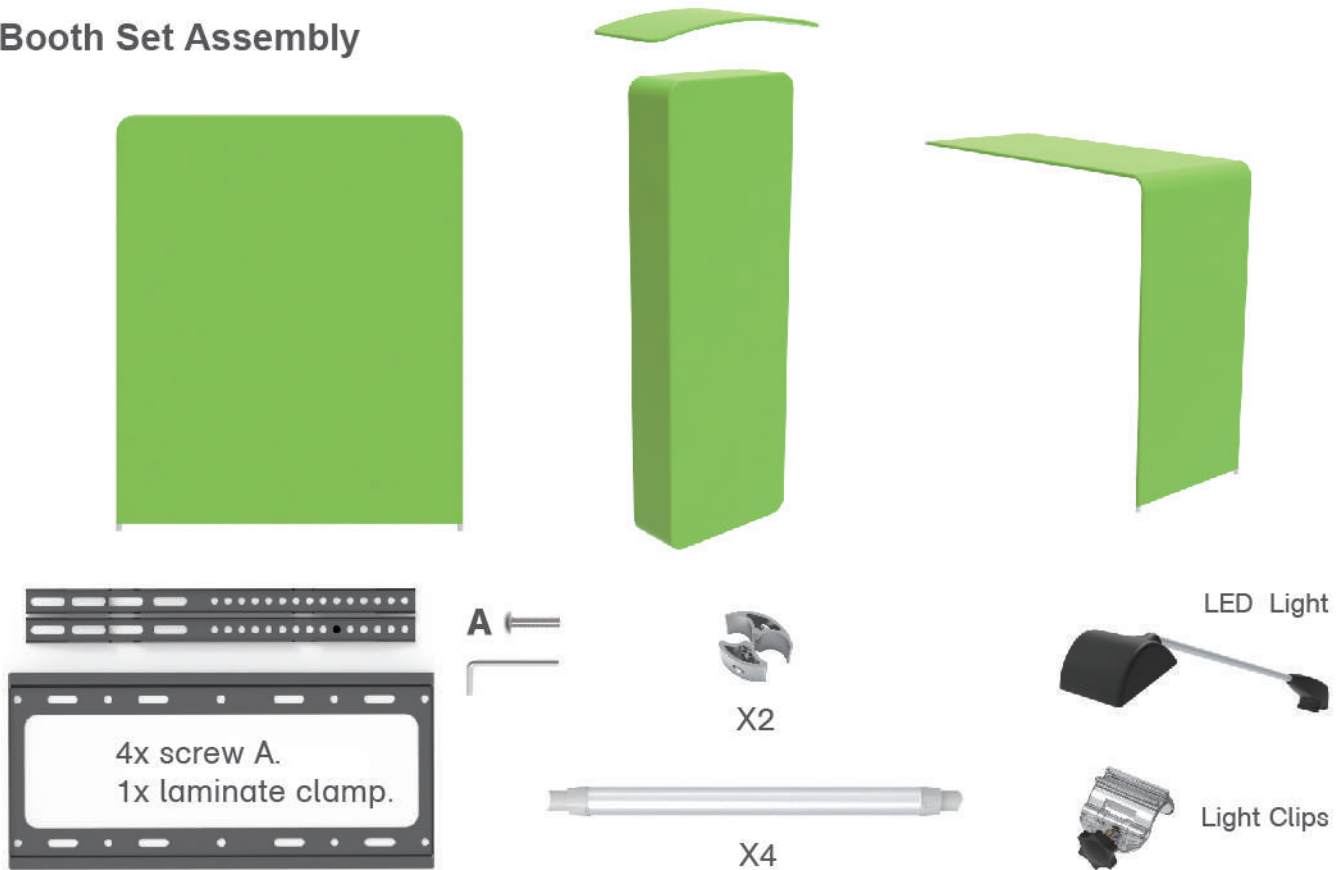
To slide over the fabric banner from side to sides and zip up





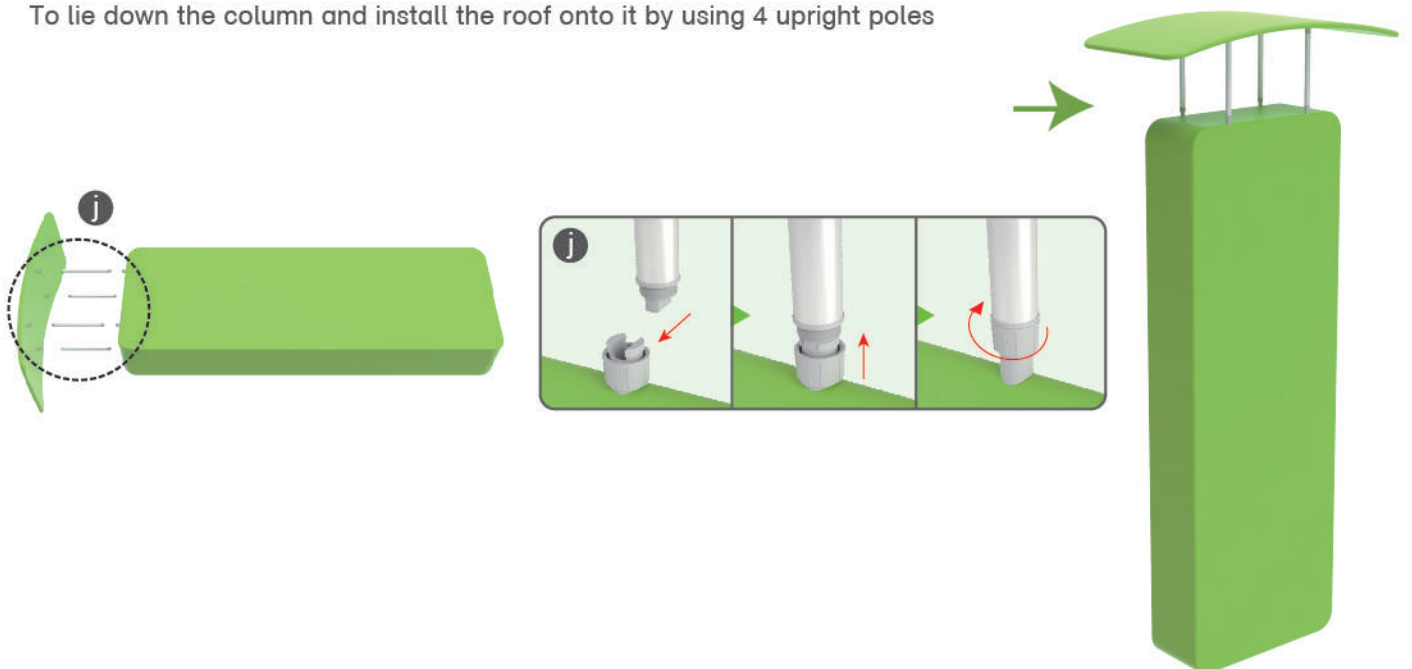
### PARTS

#### Booth Set Assembly



#### STEP 01

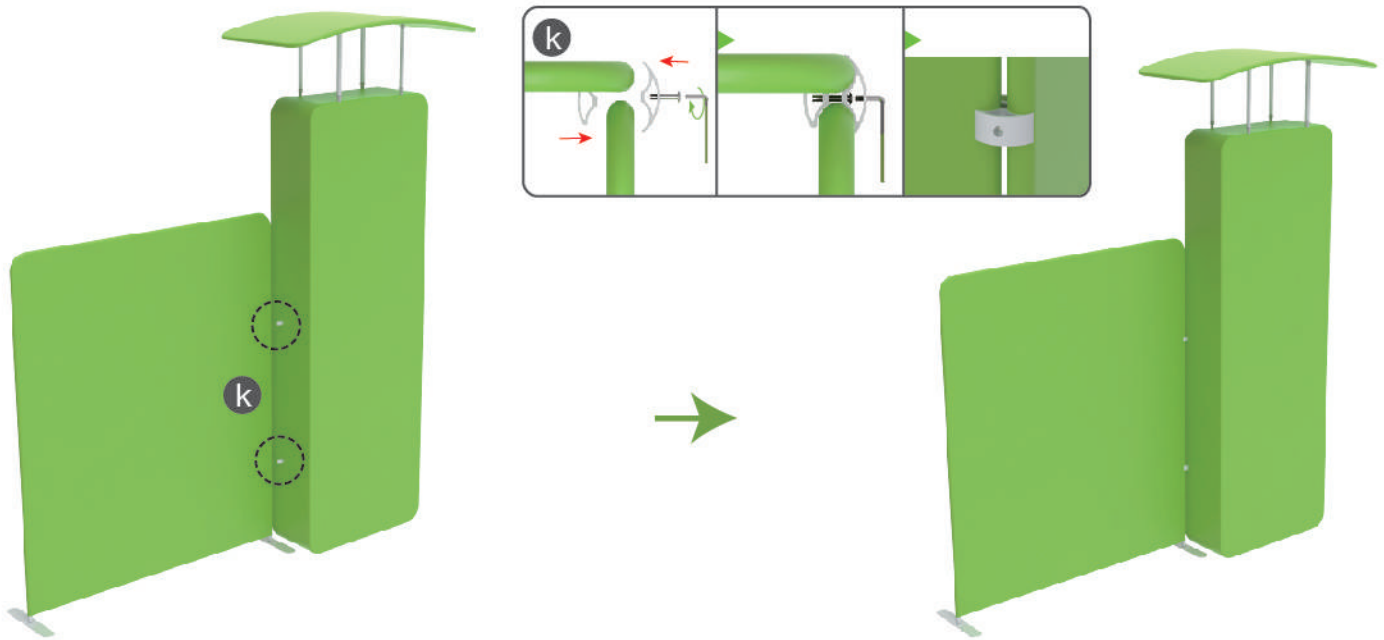
To lie down the column and install the roof onto it by using 4 upright poles



### PARTS

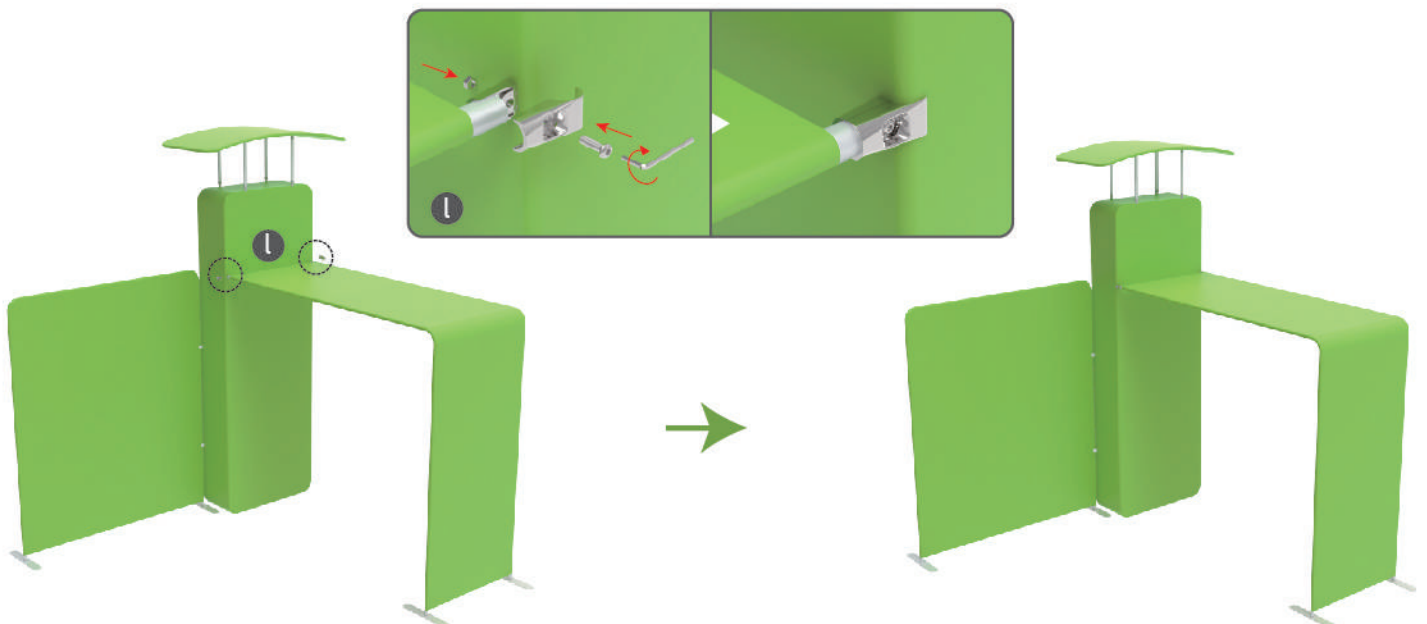
#### STEP 02

To use C clip to connect the backwall with the column perfectly



#### STEP 03

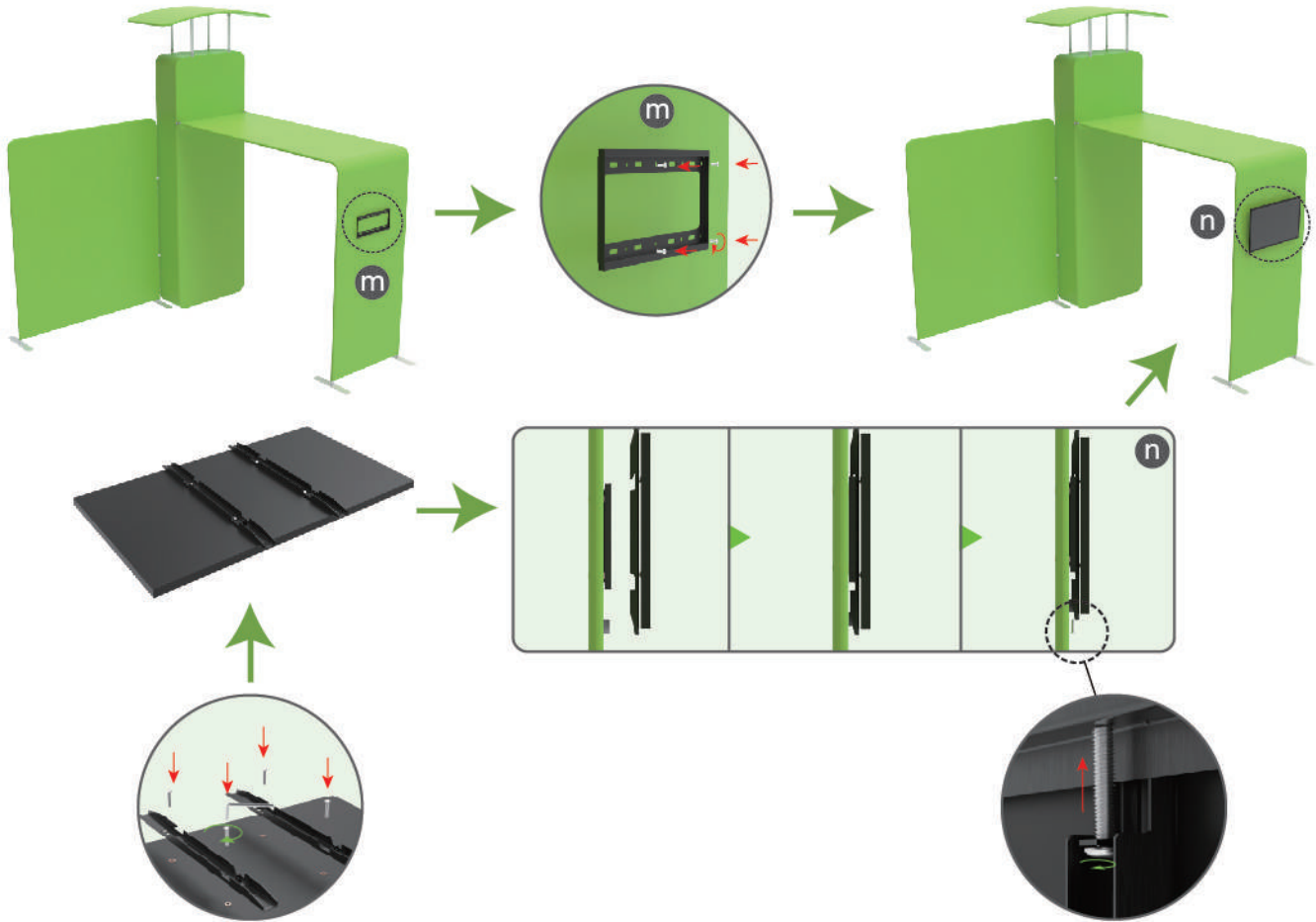
To use the clamp to install the arch stand to column



### PARTS

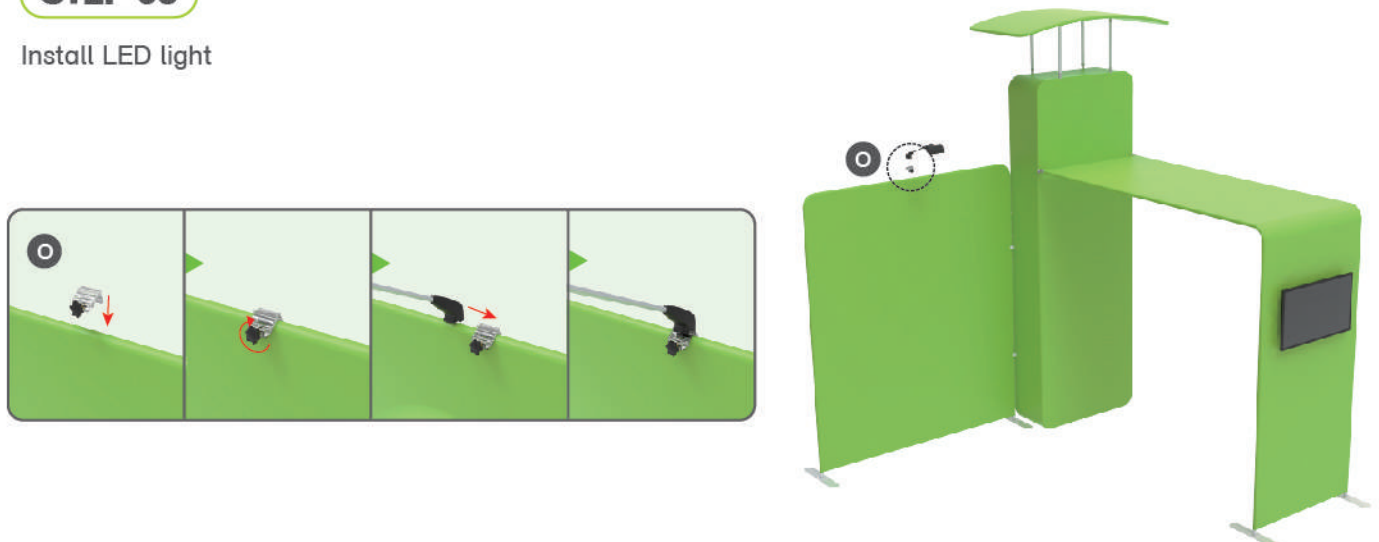
#### STEP 04

To install the TV mount in position



#### STEP 05

Install LED light

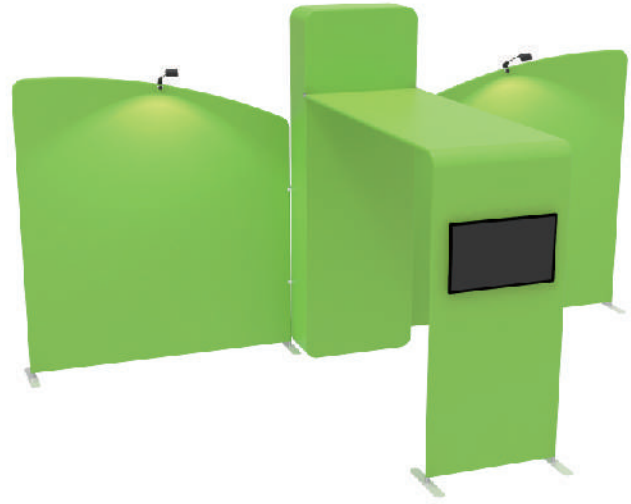


### PARTS

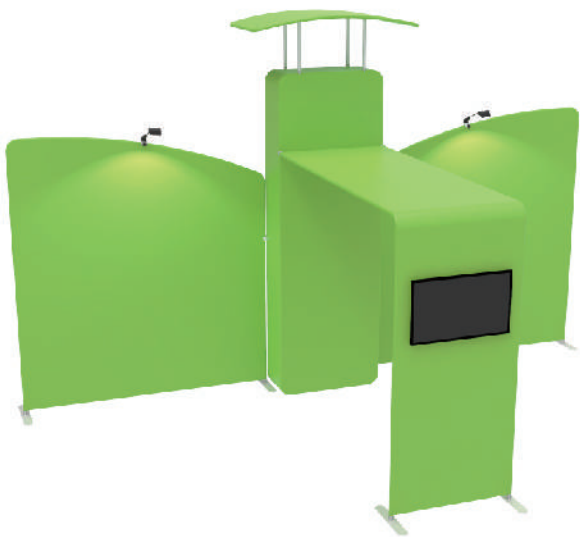
Same Assembly Steps for below Booths



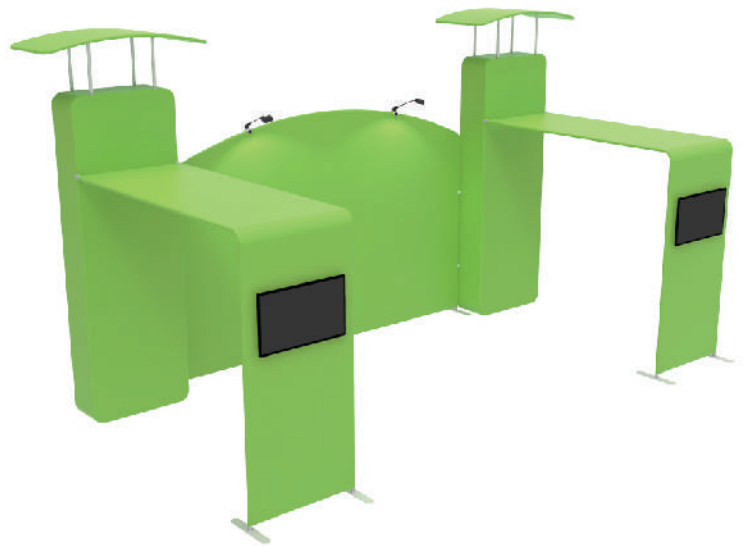
10X10FT-BOOTH-07



10X20FT-BOOTH-Q



10X20FT-BOOTH-12



10X20FT-BOOTH-14