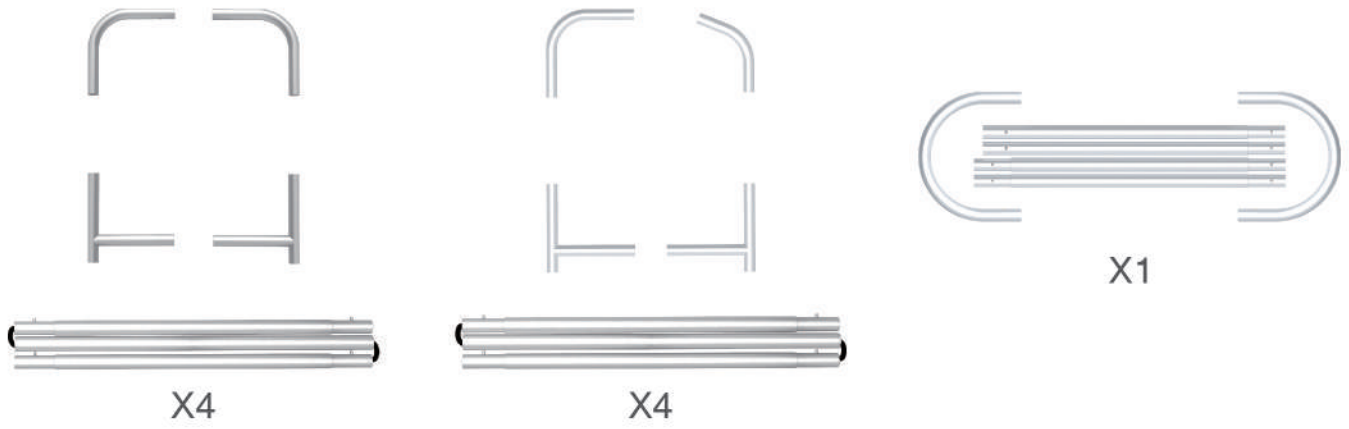


## PARTS

(1) Hardware

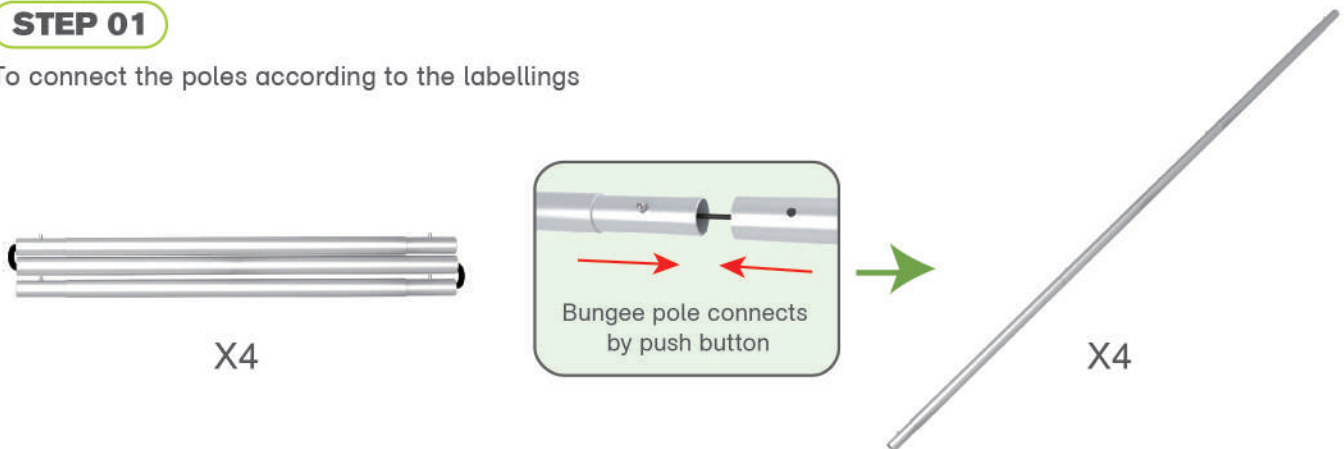


(2) Graphic printing fabric banner



### STEP 01

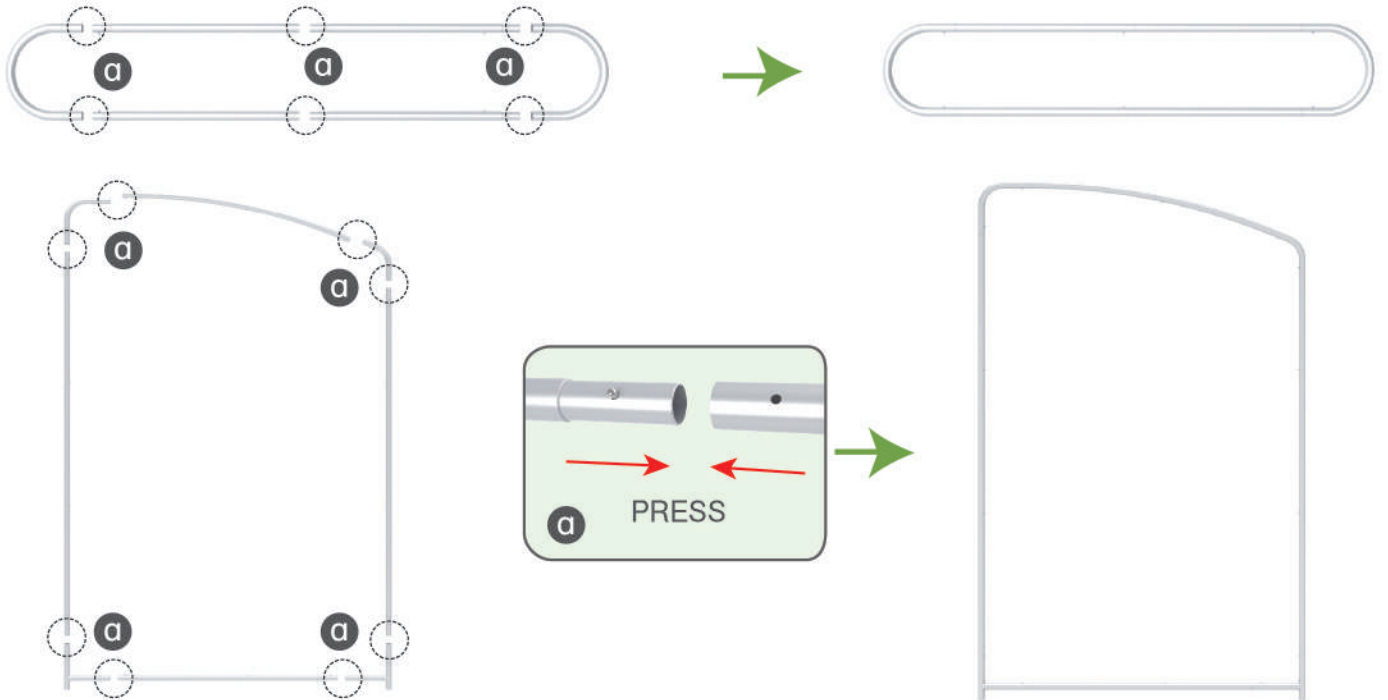
To connect the poles according to the labellings



## PARTS

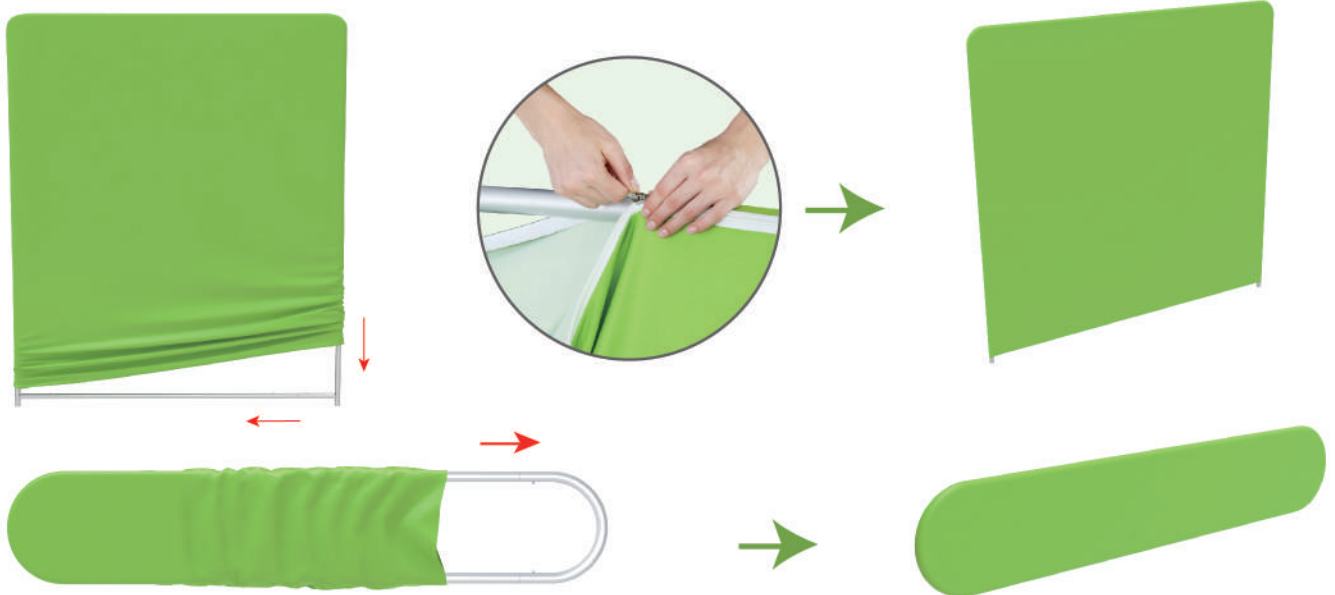
### STEP 02

To connect long poles by corner pieces according to the labellings



### STEP 03

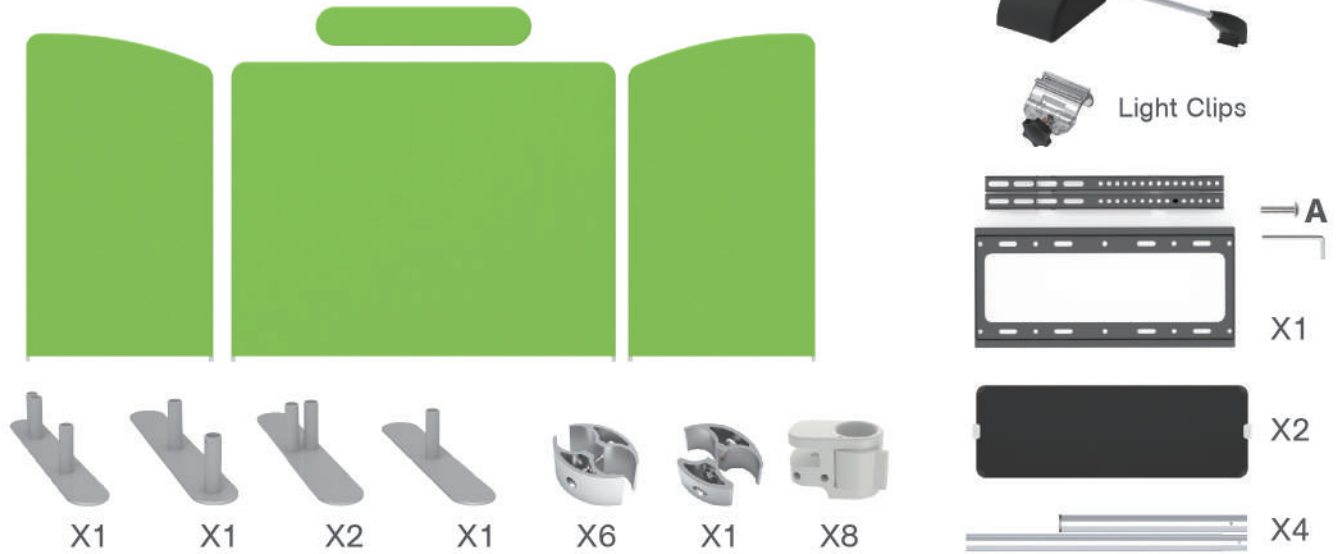
To slide the fabric banner on the frame from top and zip up at bottom



Same Steps for the rest back walls

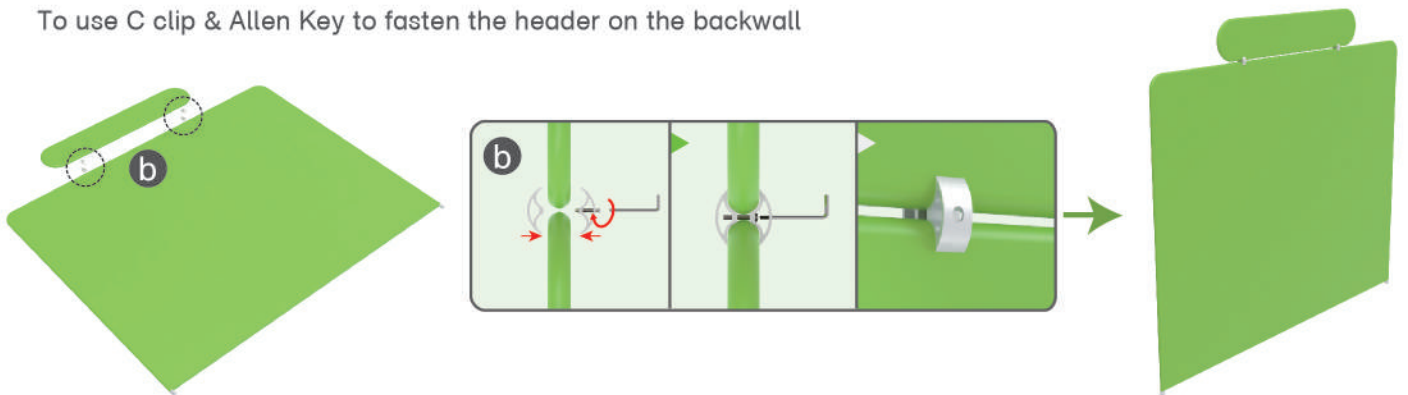
## PARTS

### Booth Set Assembly



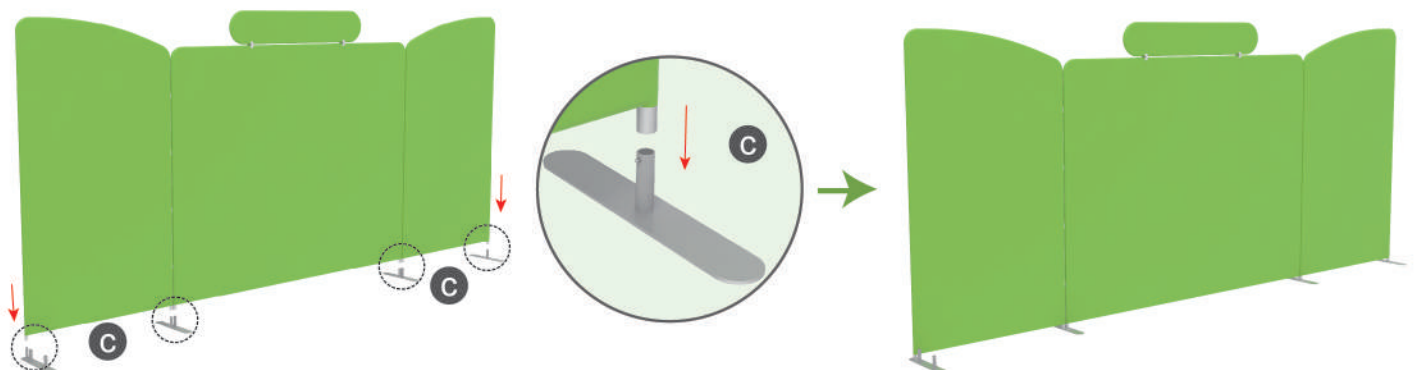
### STEP 01

To use C clip & Allen Key to fasten the header on the backwall



### STEP 02

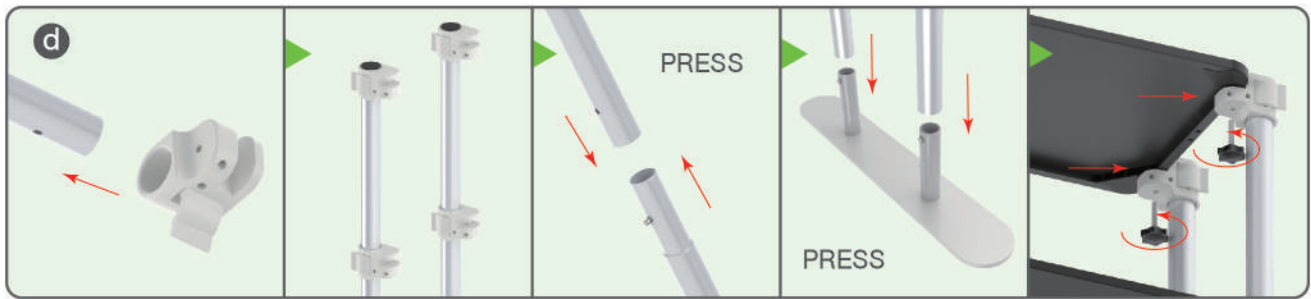
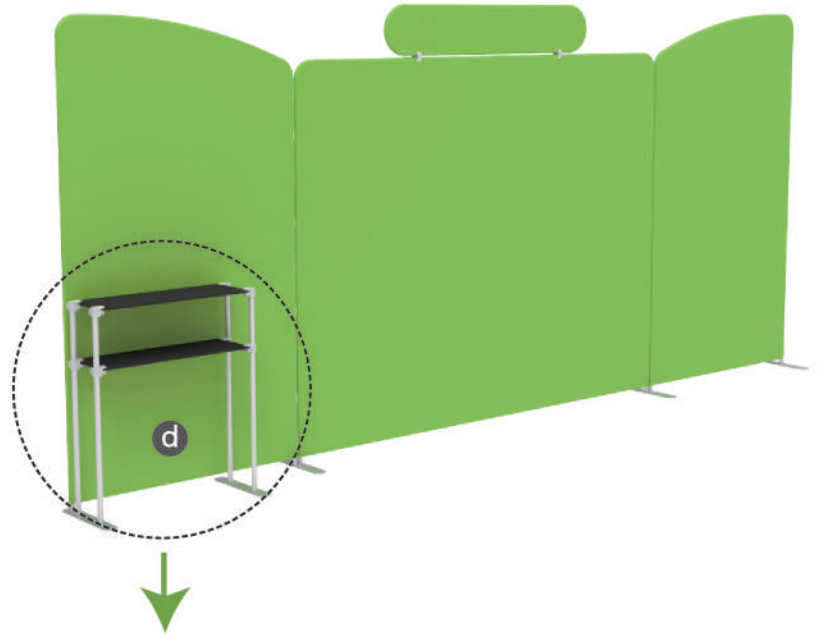
To install the "double-head" feet in position to make backwalls stand together



## PARTS

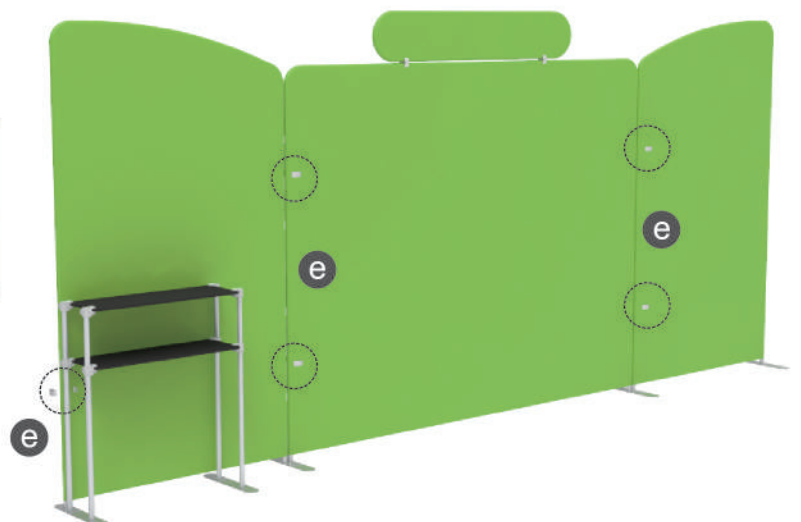
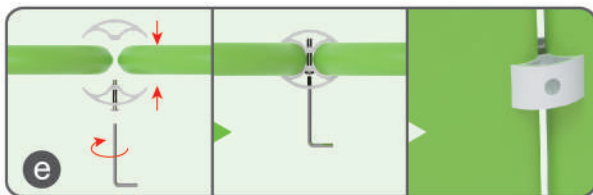
### STEP 03

To install the shelves in position



### STEP 04

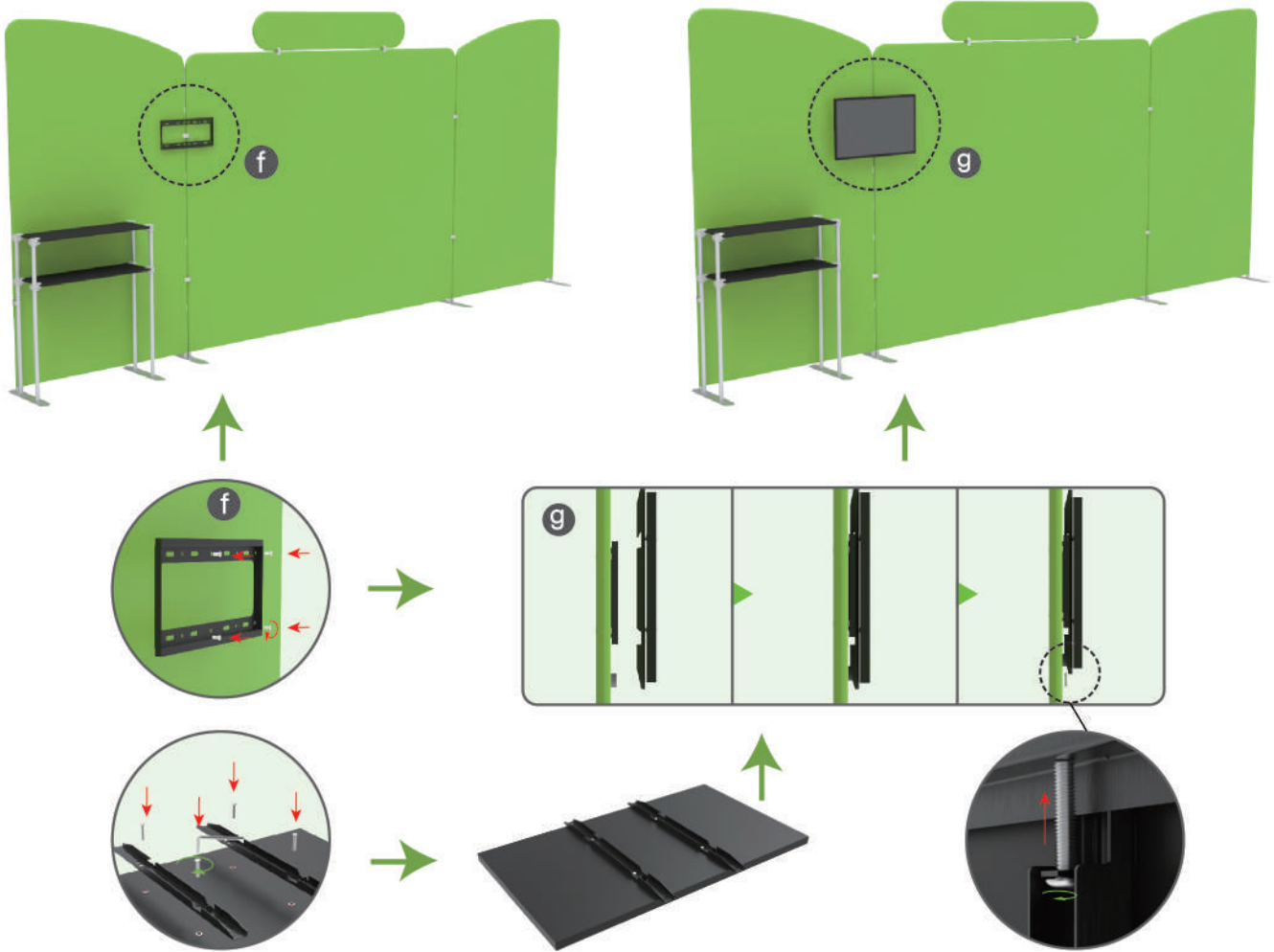
To put the C clip into the gap between backwalls and fasten by screws



## PARTS

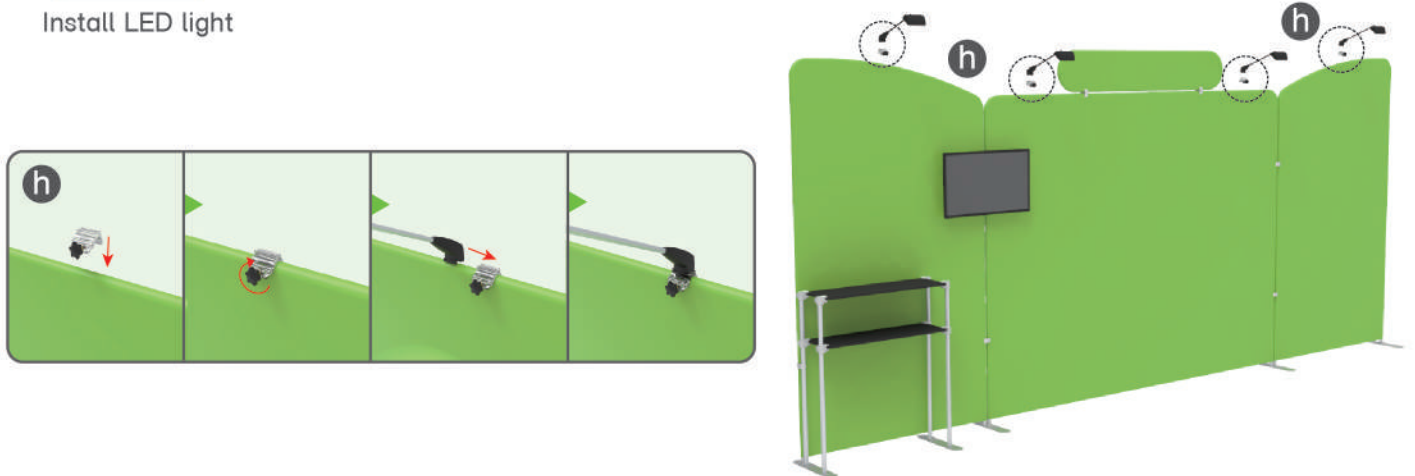
### STEP 05

To install the TV mount in position



### STEP 06

Install LED light



## PARTS

SAME STEPS FOR 10X20ft Booth-K



10X20ft-Booth-H



10X20ft-Booth-K