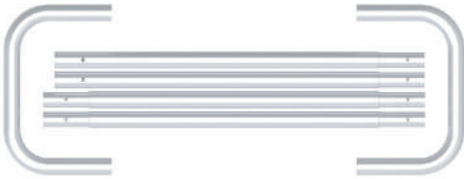


PARTS

(1) Hardware

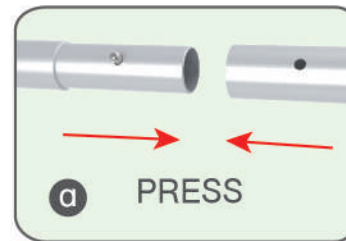
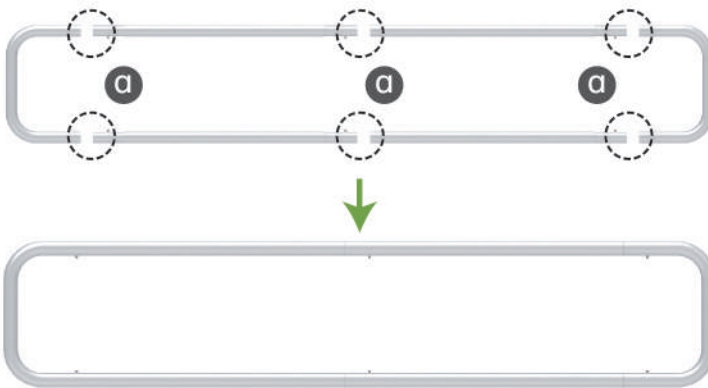


(2) Graphic printing fabric banner



STEP 01

To connect the poles according to the labellings

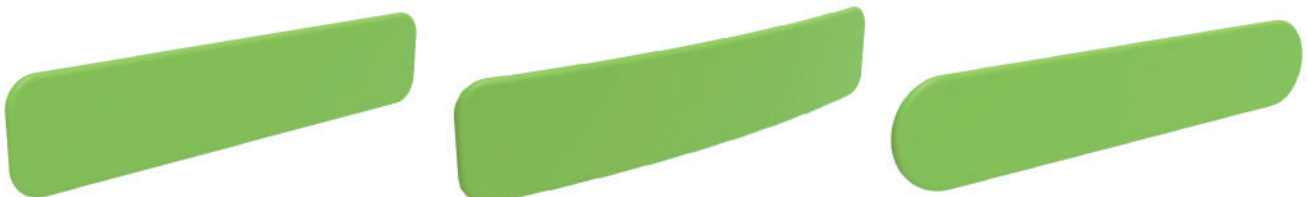


STEP 02

To wrap up the fabric banner from side to side and zip up

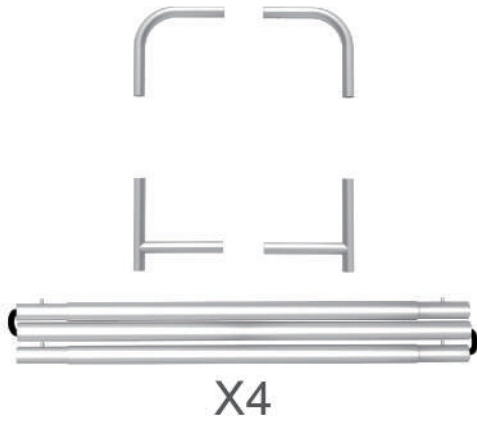


Same steps for below style of headers



PARTS

(1) Hardware

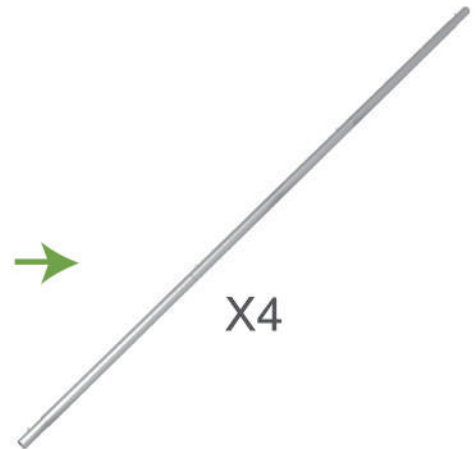
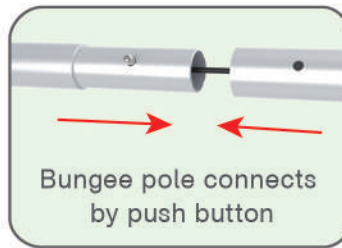
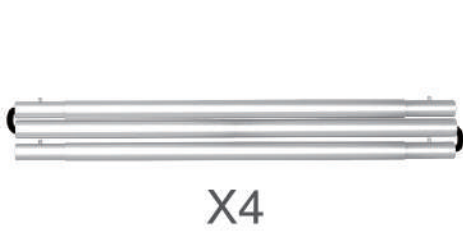


(2) Graphic printing fabric banner



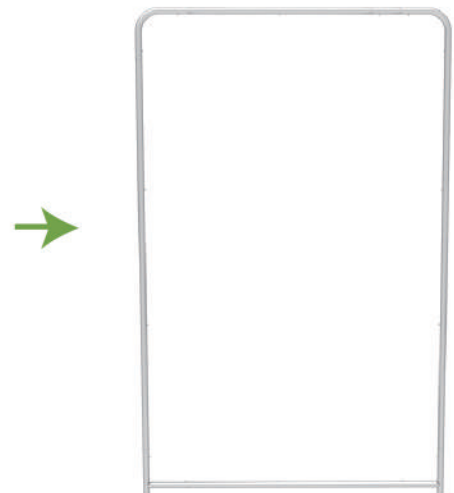
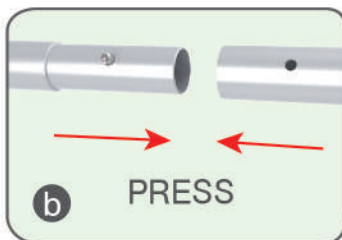
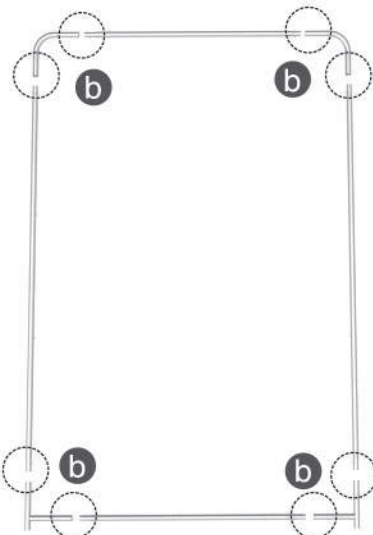
STEP 01

To connect the poles according to the labellings



STEP 02

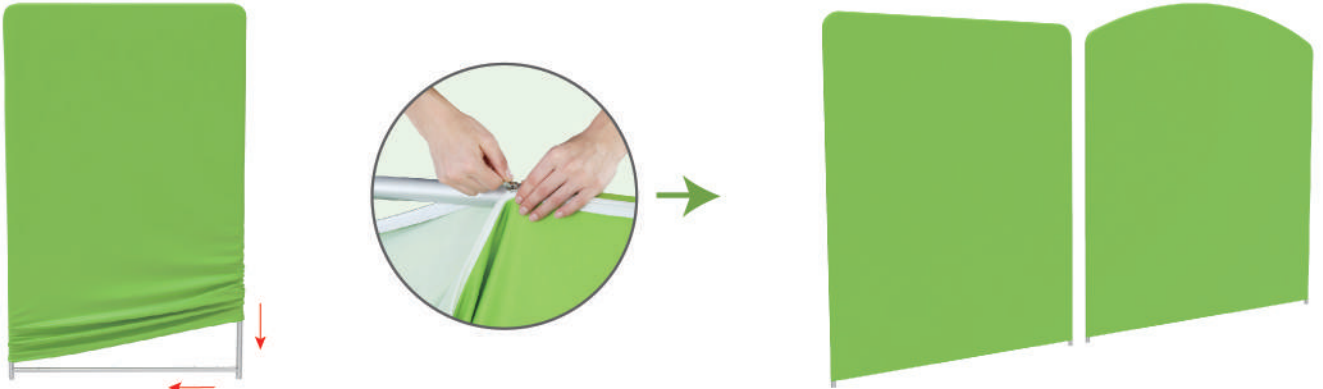
To connect the long poles by corner pieces



PARTS

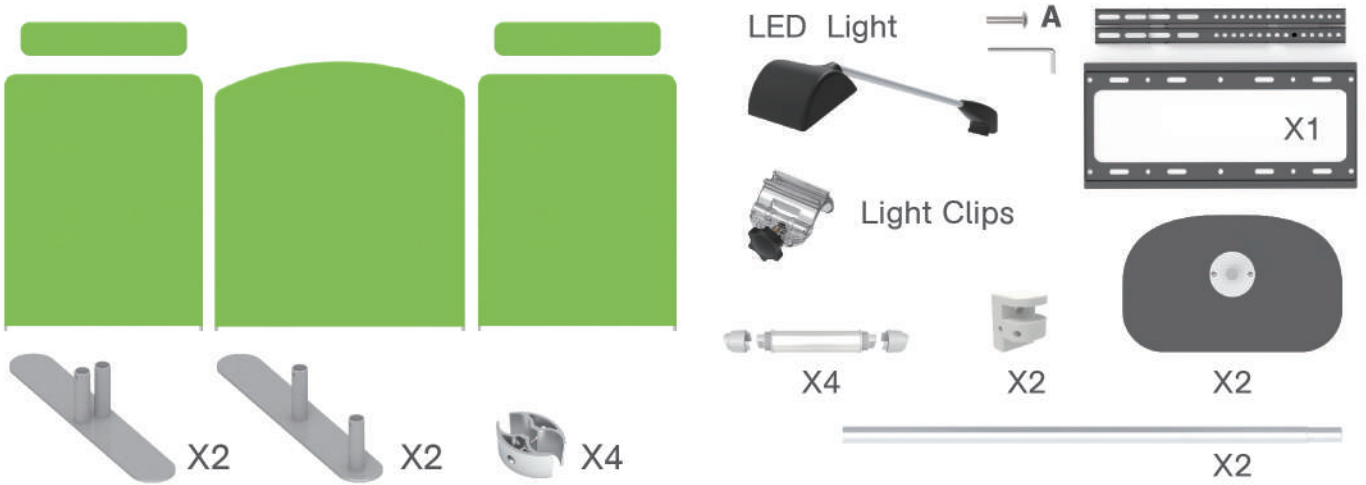
STEP 03

To slide the fabric banner on the frame from top and zip up at bottom



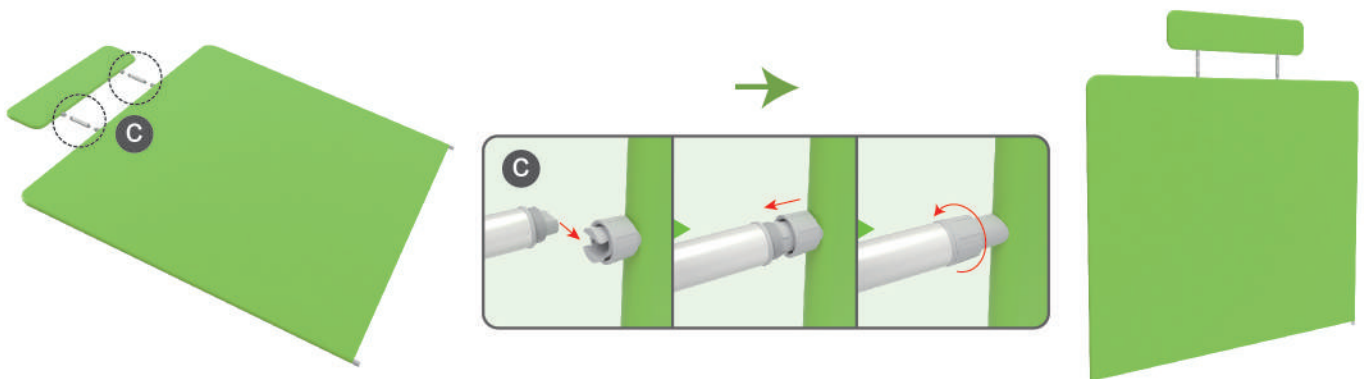
Same Steps for another Display Wall

Booth Set Assembly



STEP 01

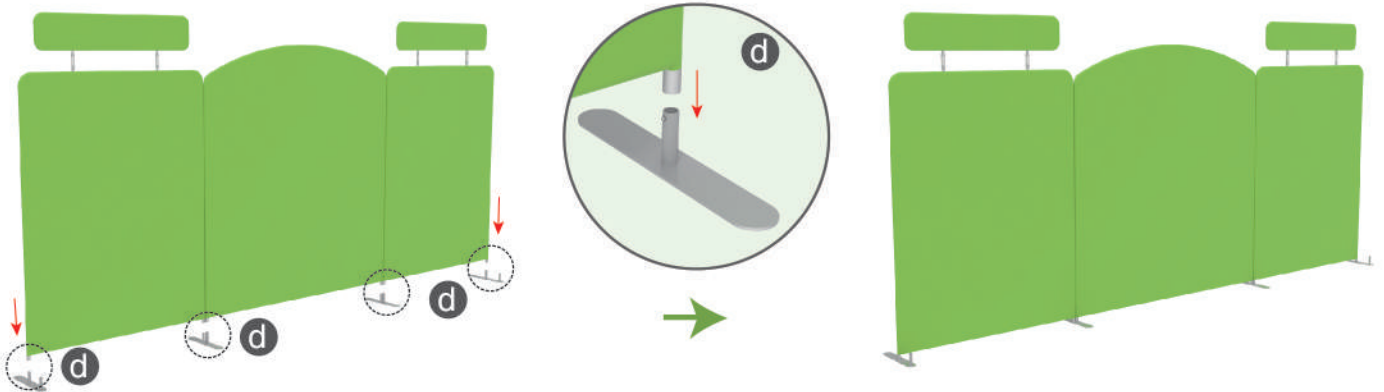
To lie down the backwall and header then install the upright pole in position



PARTS

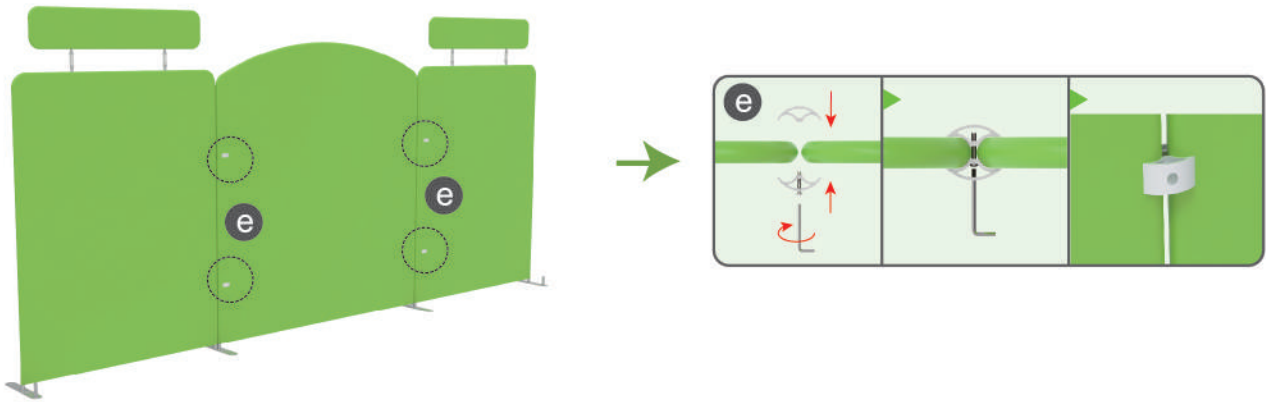
STEP 02

To assemble the stand feet in position



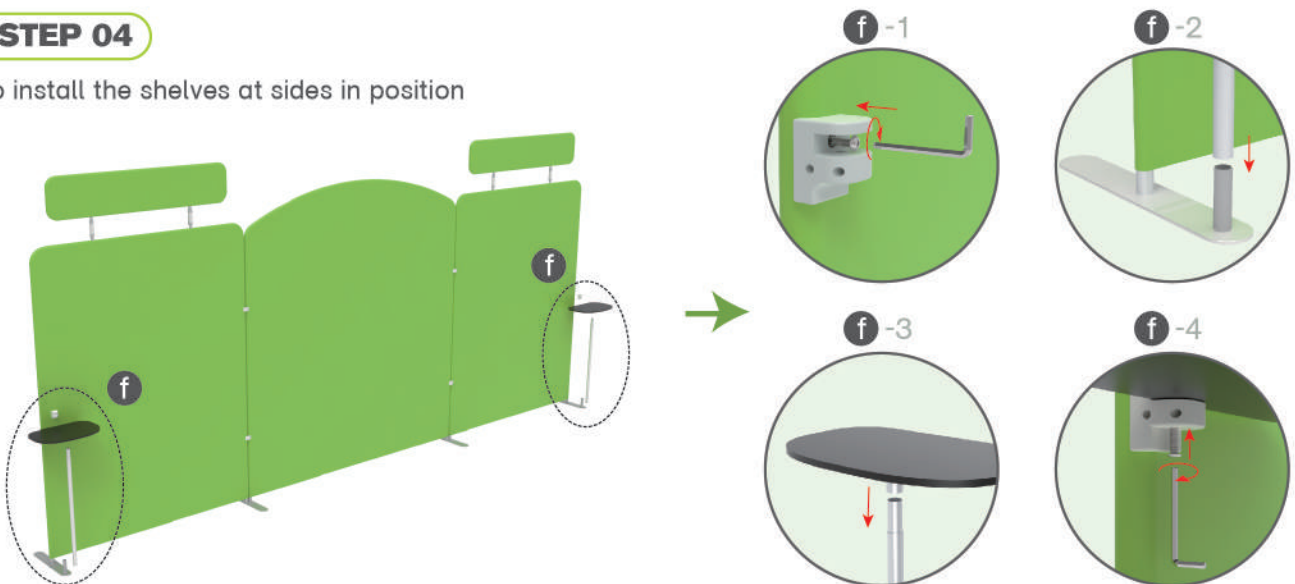
STEP 03

To put the C clips in between display wall and fasten for standing perfectly



STEP 04

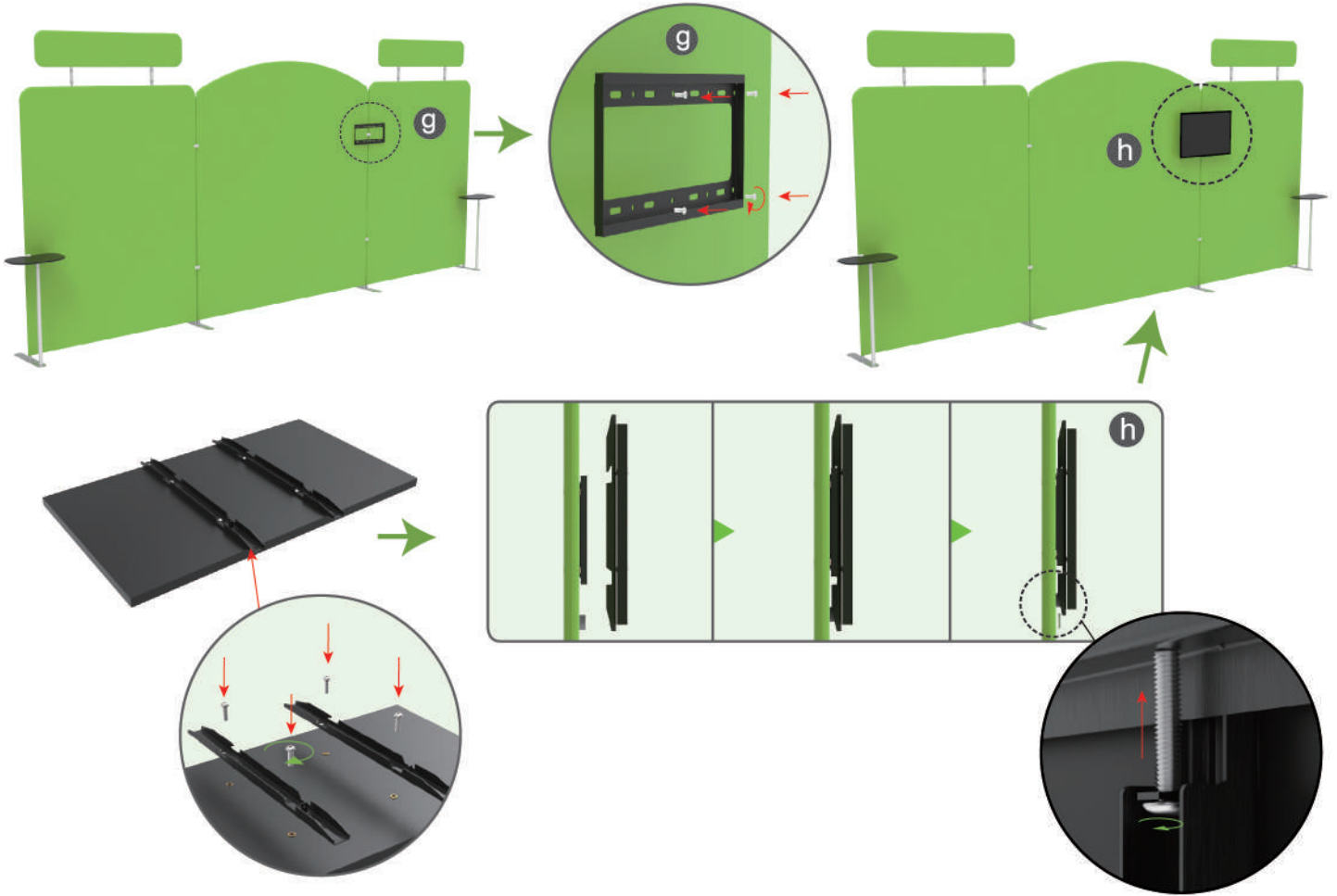
To install the shelves at sides in position



PARTS

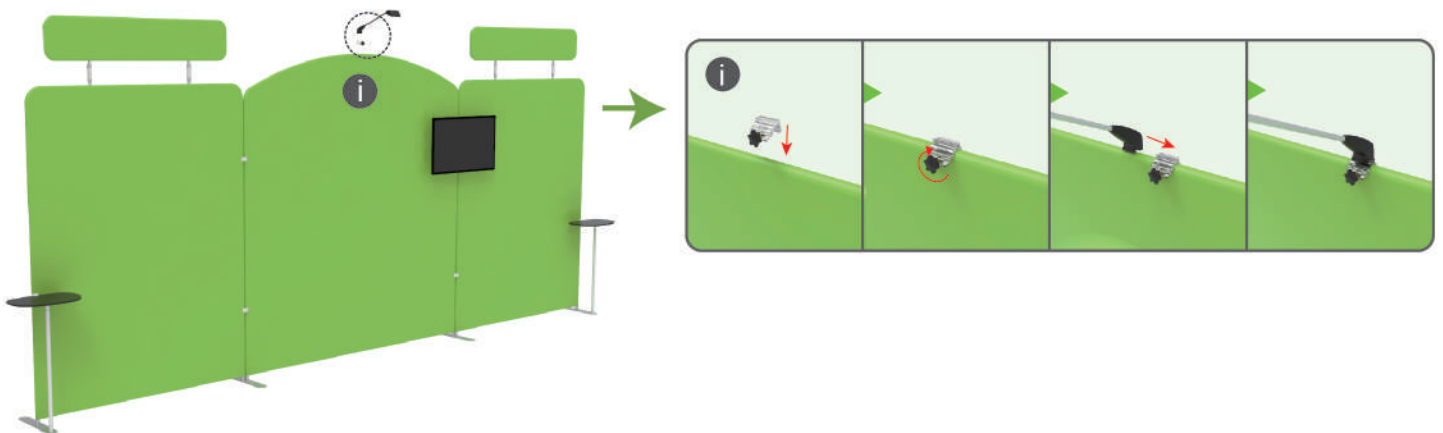
STEP 05

To install the TV mount in position



STEP 06

Install LED light



PARTS

SAME STEPS FOR 10X20ft-Booth-08



10X20FT-BOOTH-06



10X20FT-BOOTH-08