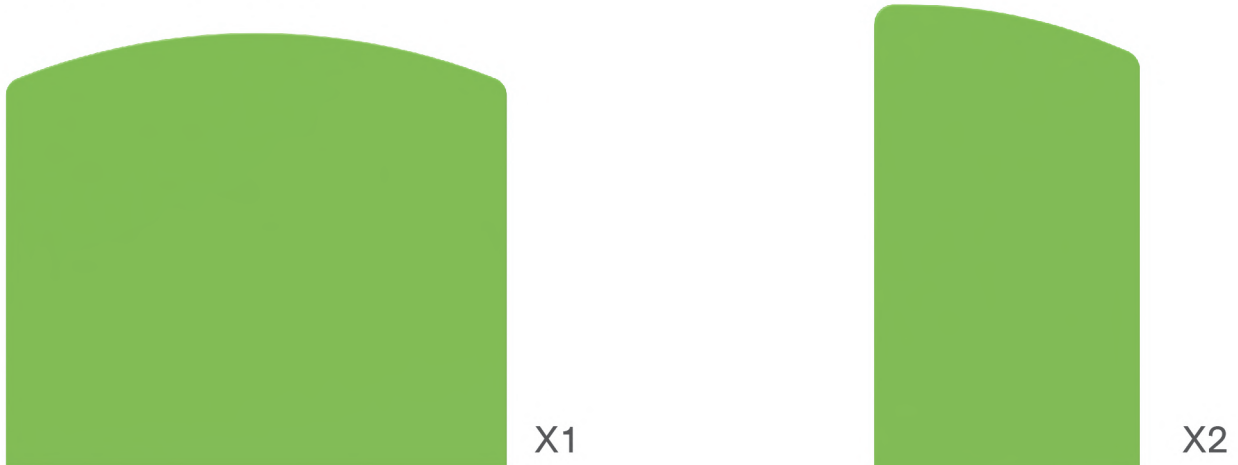


## PARTS

### (1) Hardware

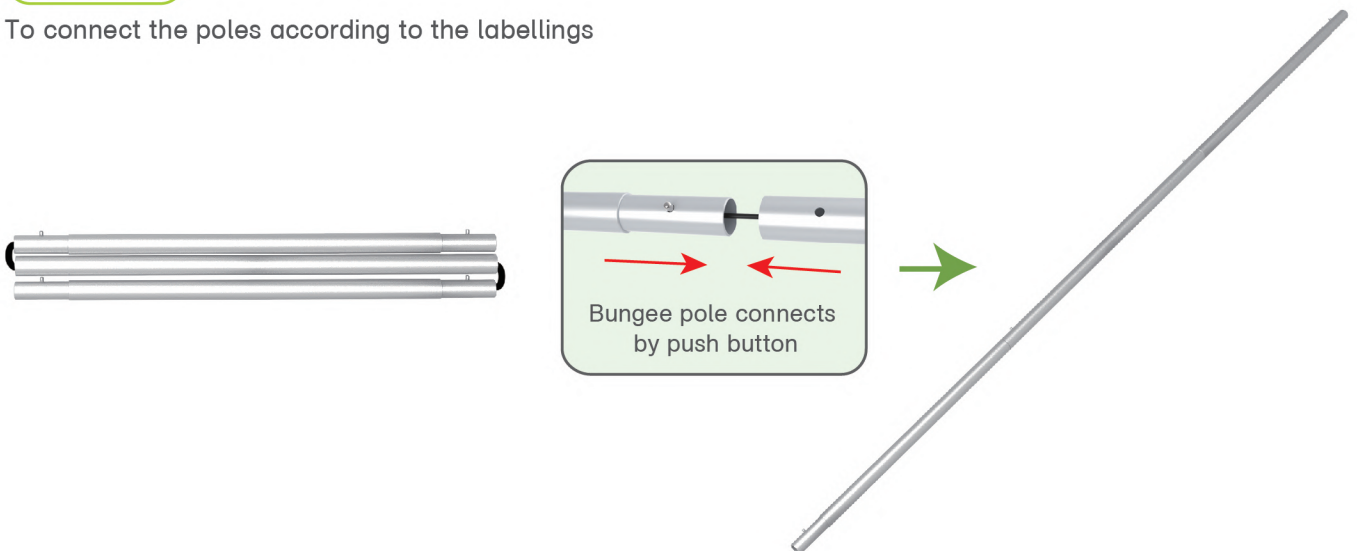


### (2) Graphic printing fabric banner



### STEP 01

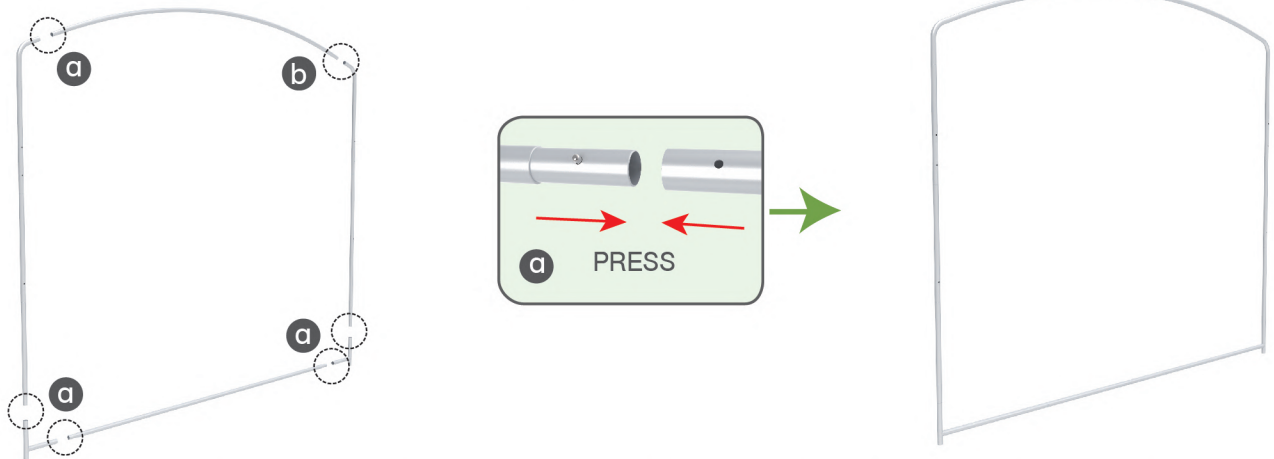
To connect the poles according to the labellings



## PARTS

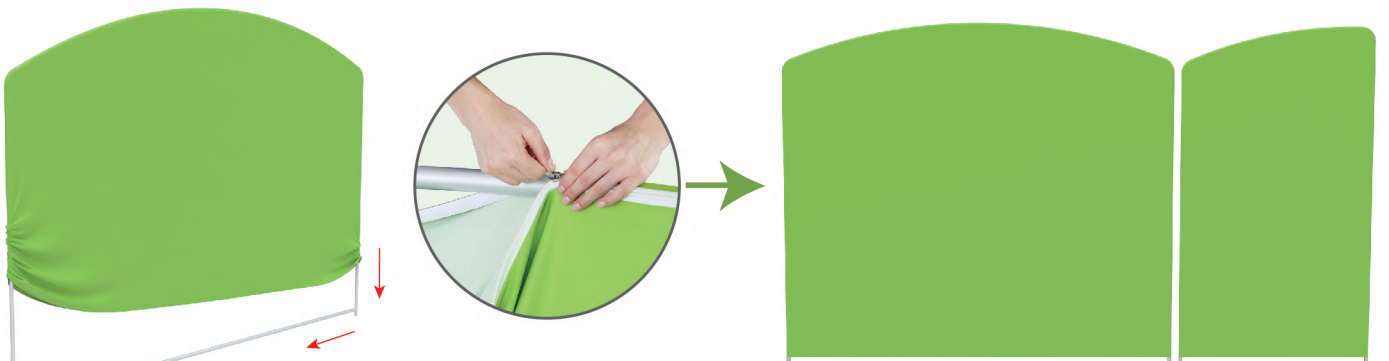
### STEP 02

To connect long poles by corner pieces according to the labellings



### STEP 03

To slide the fabric banner on the frame from top and zip up at bottom



Same steps for below style of headers

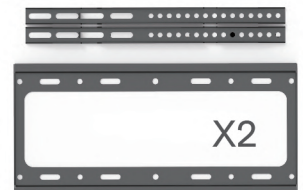
## Booth Set Assembly



LED Light



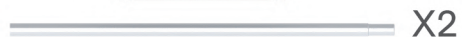
Light Clips



X2



X2

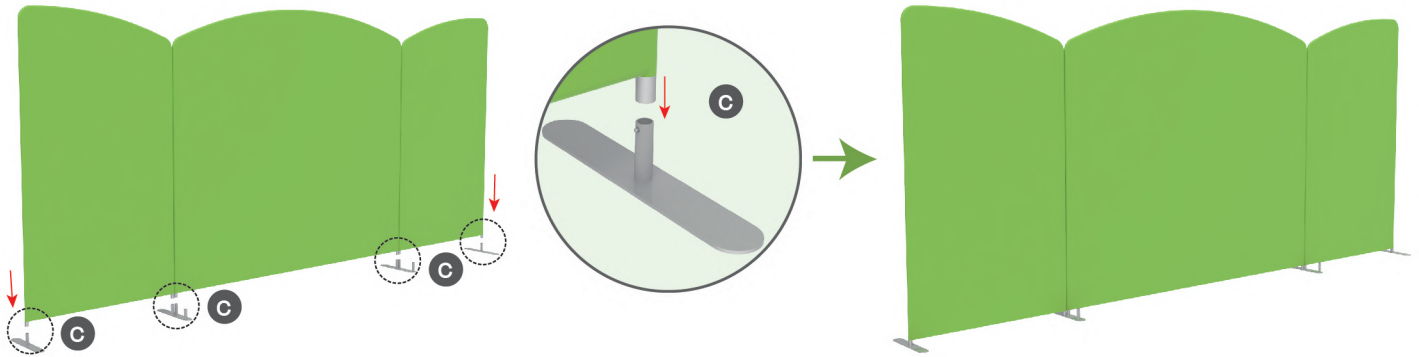


X2

## PARTS

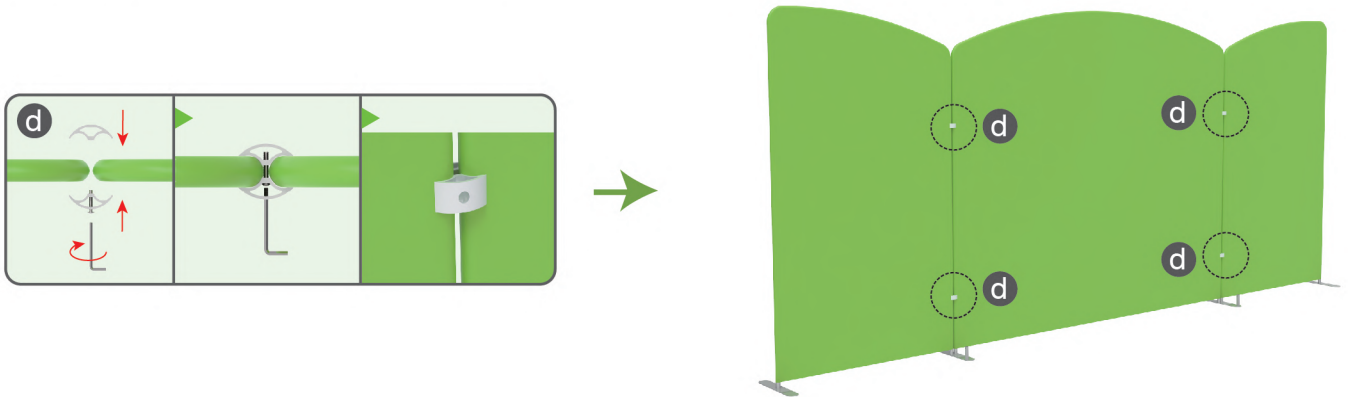
### STEP 01

To install the "double-head" feet in position to make backwalls stand together



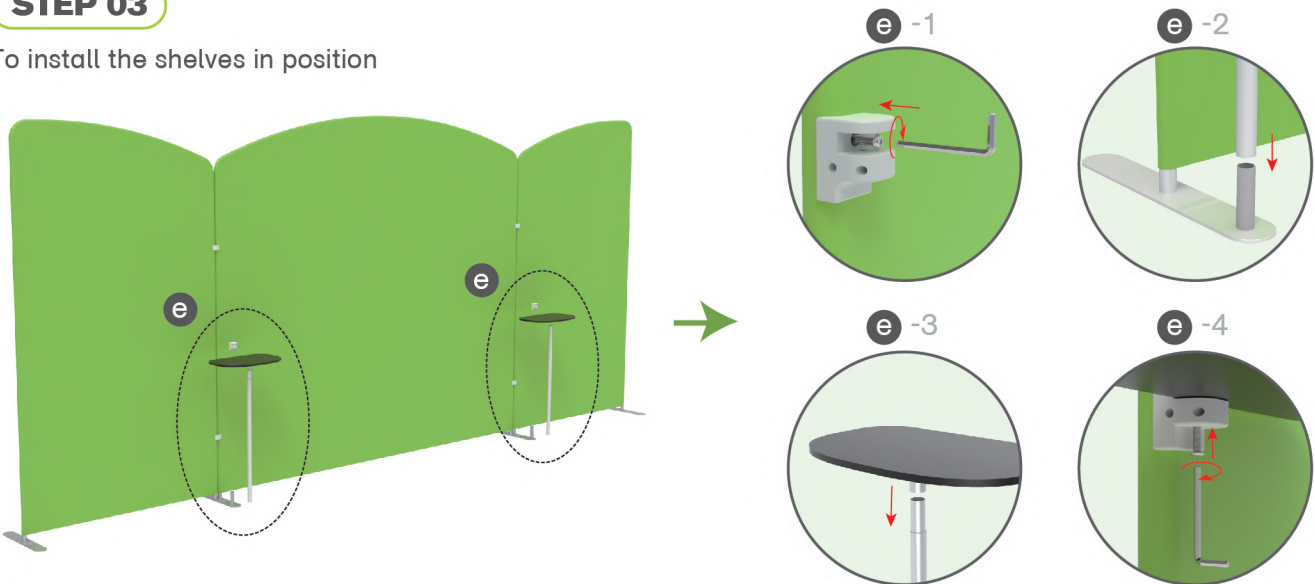
### STEP 02

To put the C clip into the gap between backwalls and fasten by screws



### STEP 03

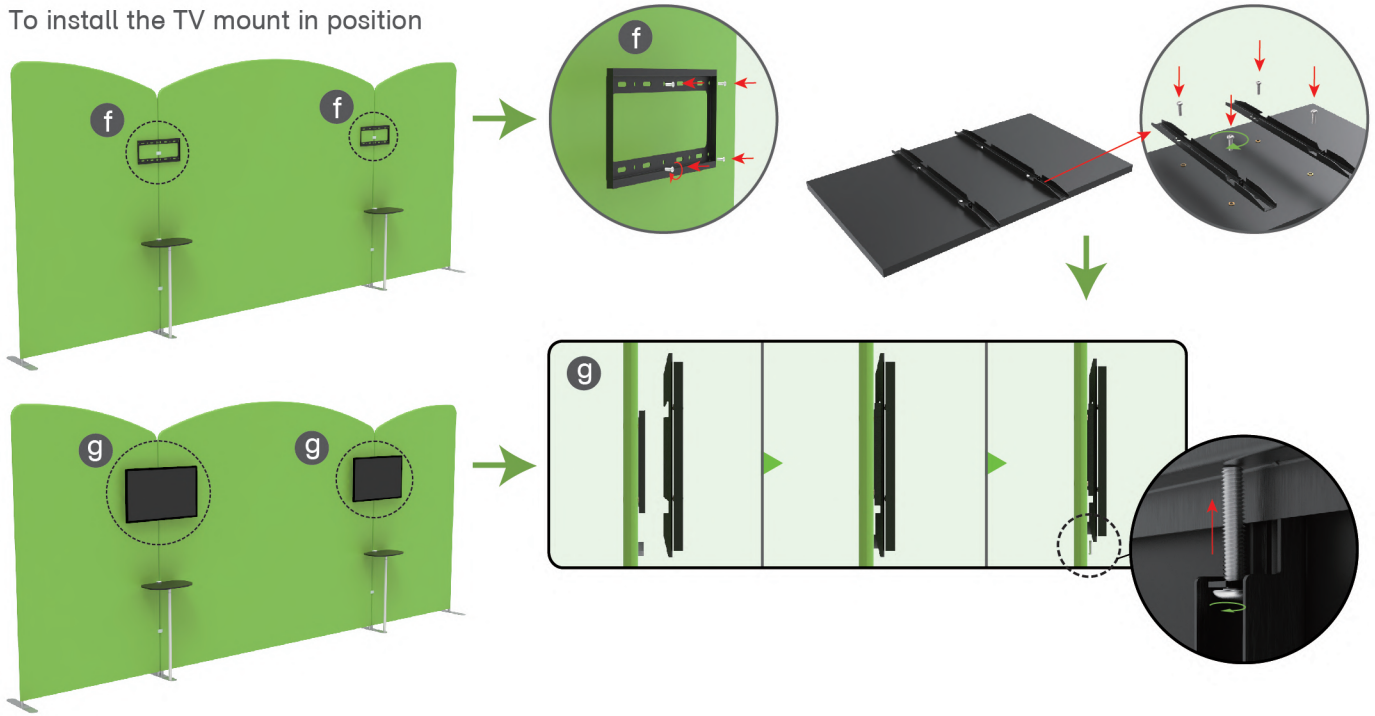
To install the shelves in position



## PARTS

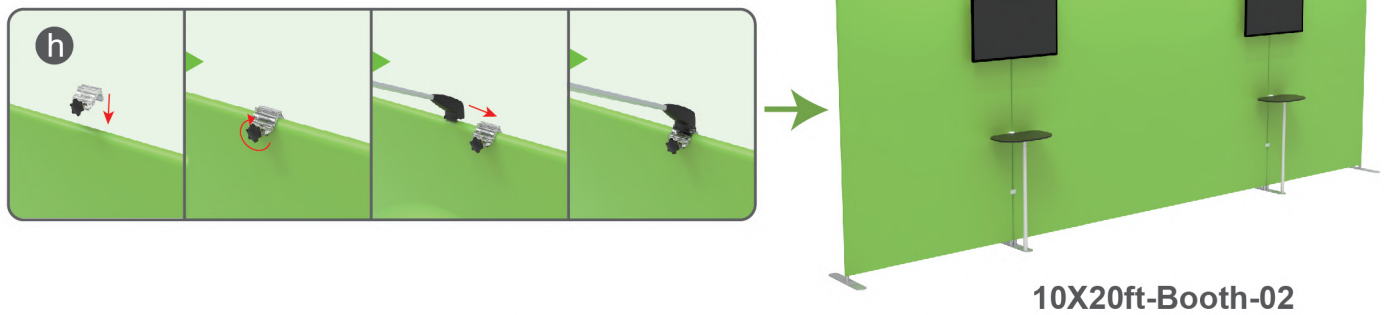
### STEP 04

To install the TV mount in position



### STEP 05

Install LED light



SAME STEPS FOR 10X20ft-Booth-03

