

PARTS

(1) Hardware

(2) Graphic printing fabric banner

(3) LED Light
Light Clips



X4

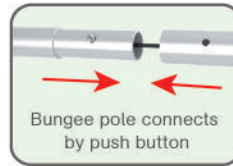


STEP 01

To connect the poles according to the labellings



X4



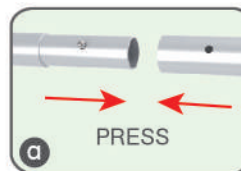
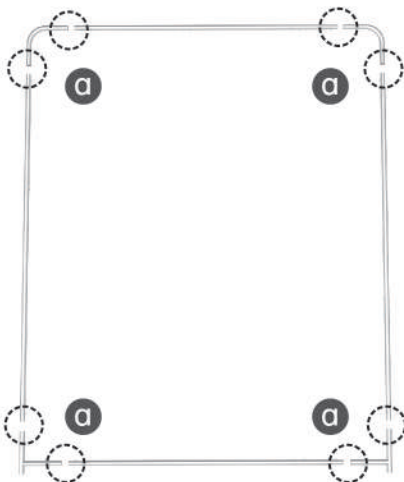
Bungee pole connects
by push button



X4

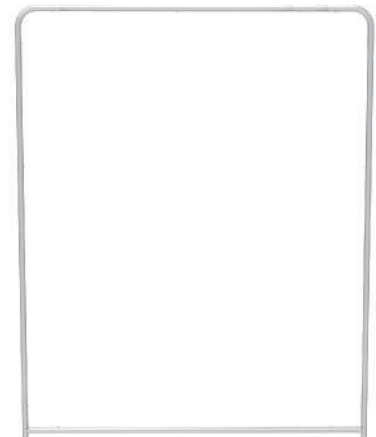
STEP 02

Connect the support poles.



a

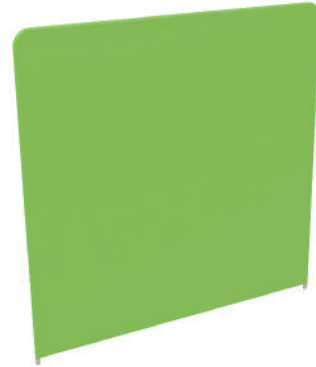
PRESS



PARTS

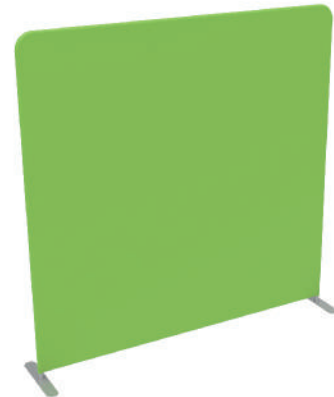
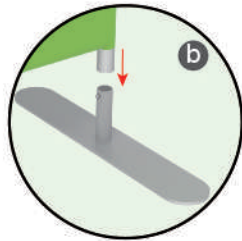
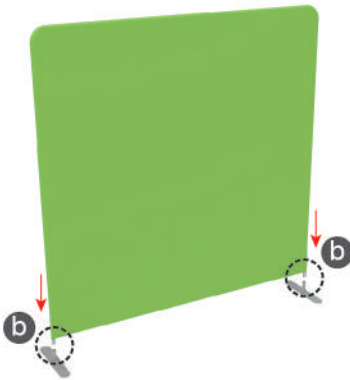
STEP 03

To slide the fabric banner on the frame from top and zip up at bottom



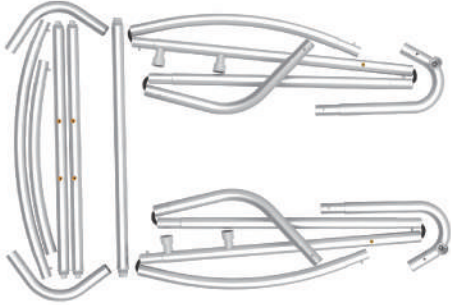
STEP 04

To assemble the stand feet in position



PARTS

(1) Hardware



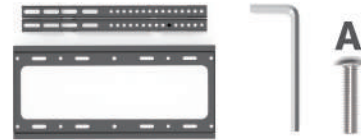
(2) Graphic printing fabric banner



(3) Shelves and Bracket x 2

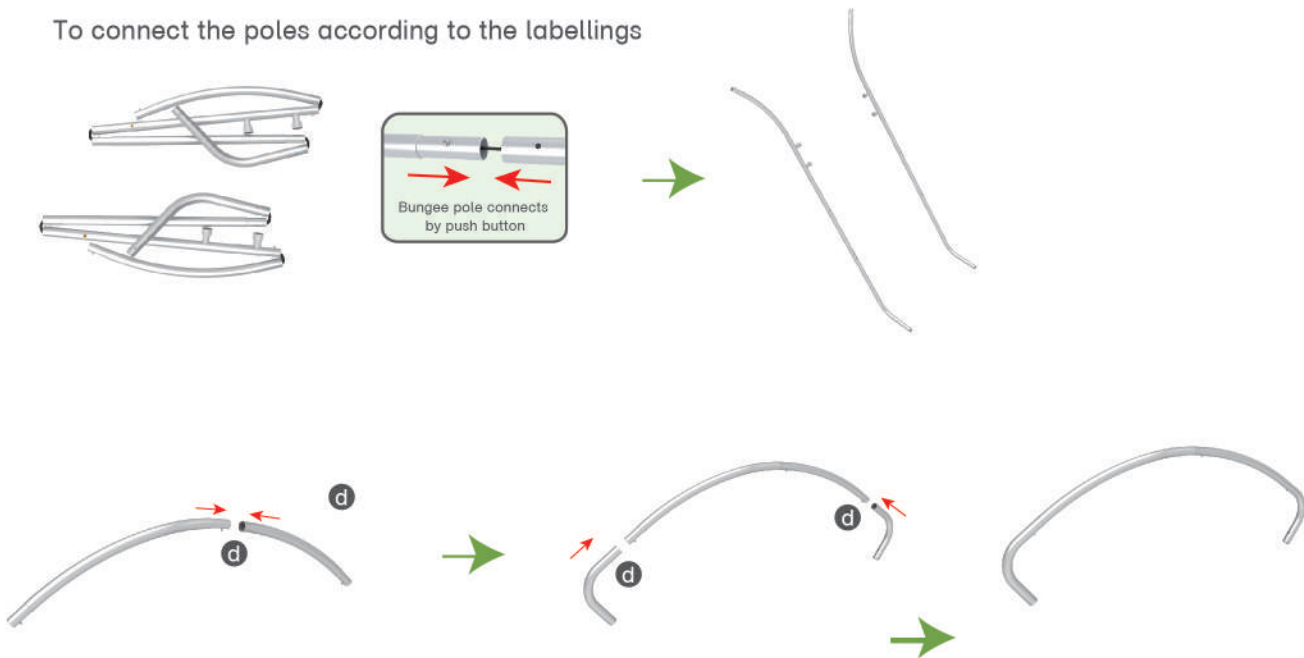


(4) 1x TV rack and screw bag

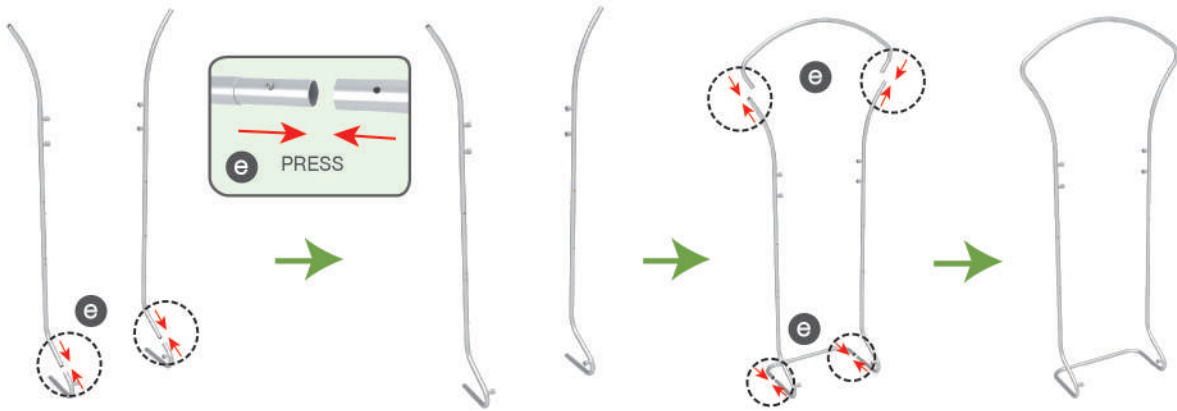


STEP 01

To connect the poles according to the labellings

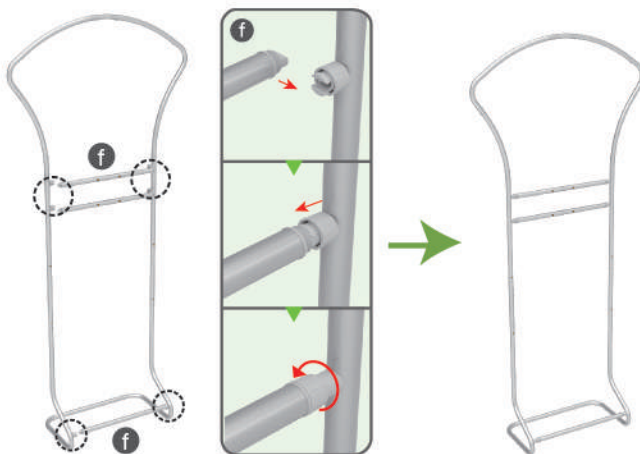


PARTS



STEP 02

To install the cross bar in position



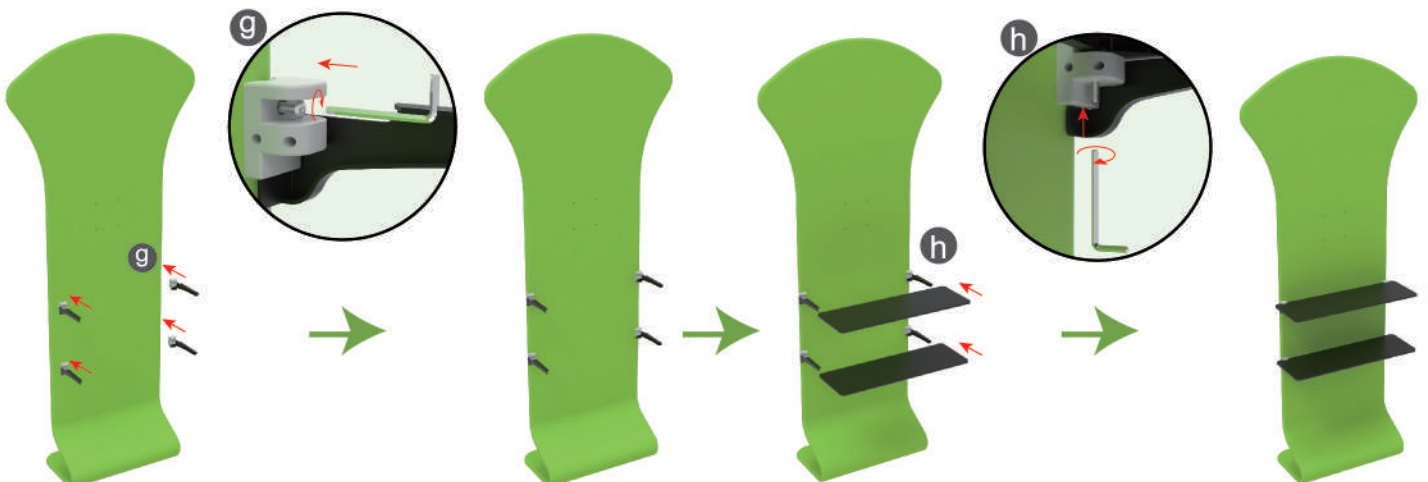
STEP 03

To slide over the fabric banner from top to bottom and zip up



STEP 04

To install the shelves by using the bracket, afterwards to install the TV mount in position



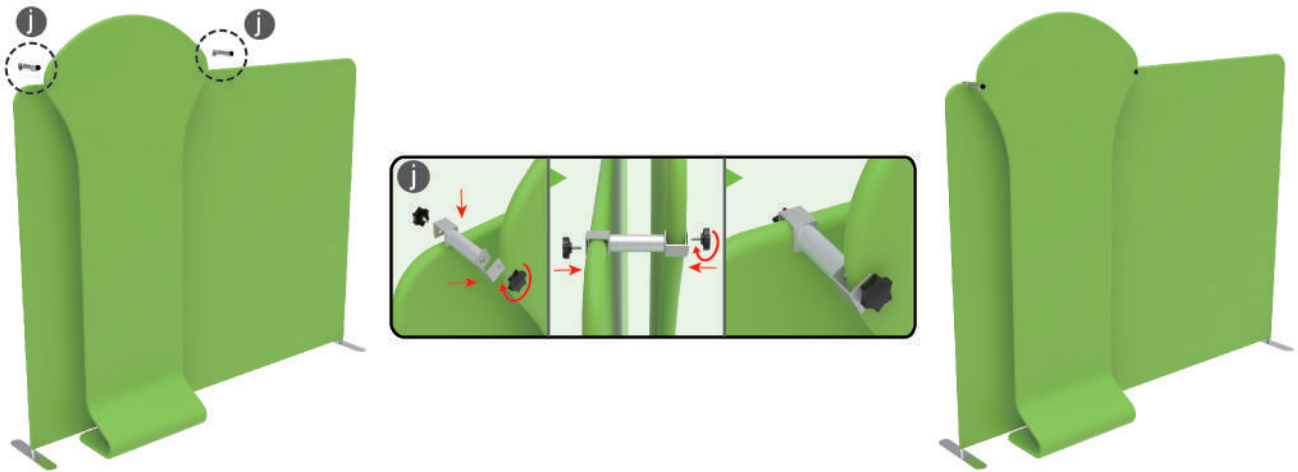
PARTS

Booth Set Assembly



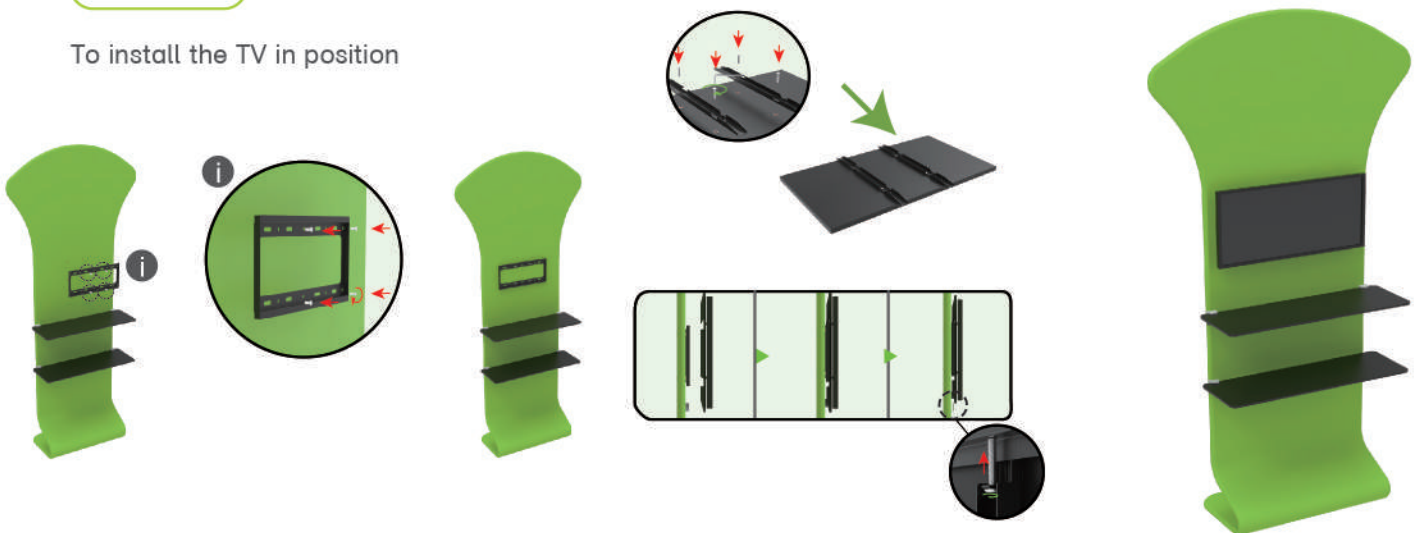
STEP 01

To install the TV stand to the backwall by using brackets



STEP 02

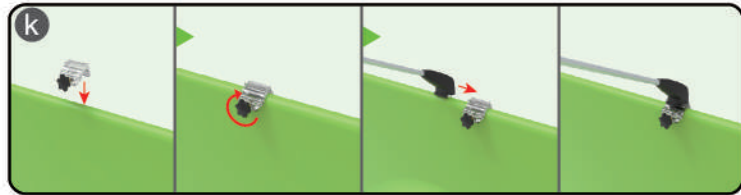
To install the TV in position



PARTS

STEP 03

Install LED light



Same Assembly Steps for below Booths



10X10ft-Booth-I



10X10ft-Booth-Z



10X10ft-Booth-N