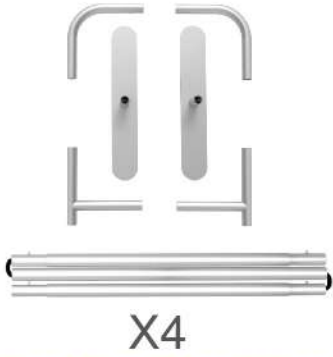


PARTS

(1) Hardware

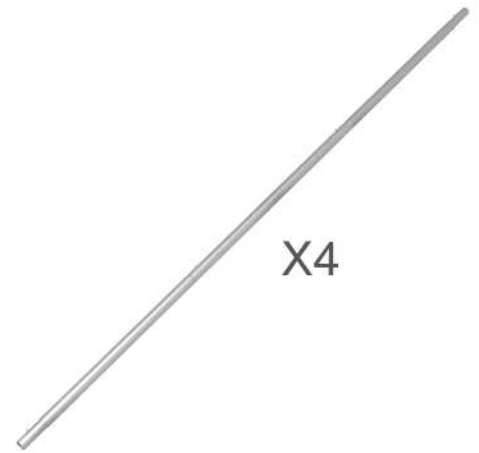
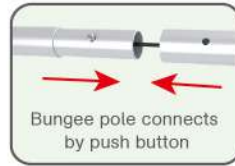
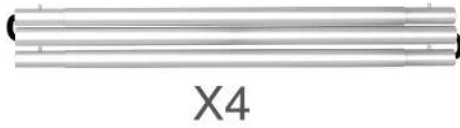


(2) Graphic printing fabric banner



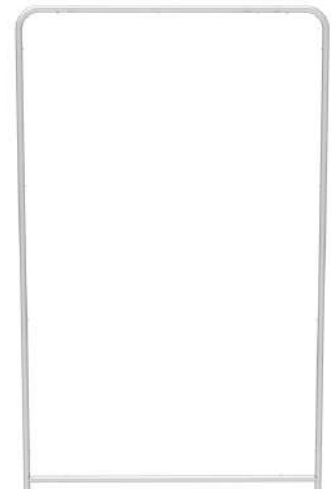
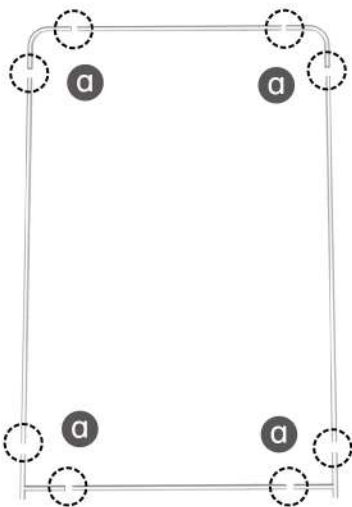
STEP 01

To connect the poles according to the labellings



STEP 02

Connect the support poles.



PARTS

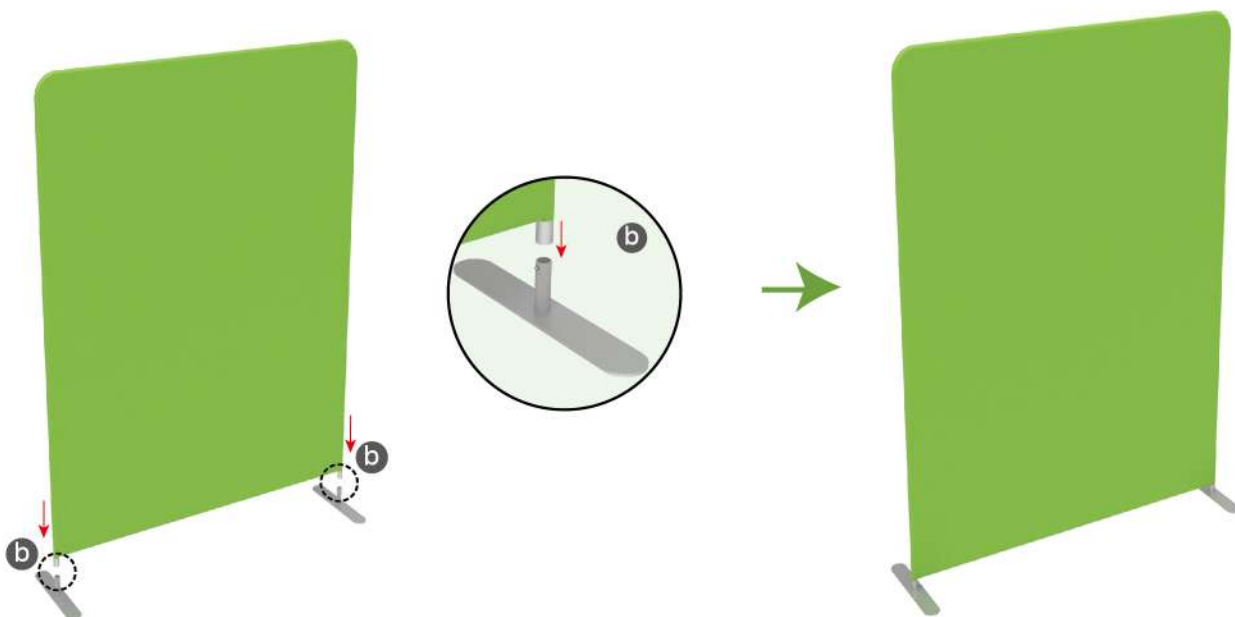
STEP 03

To slide the fabric banner on the frame from top and zip up at bottom



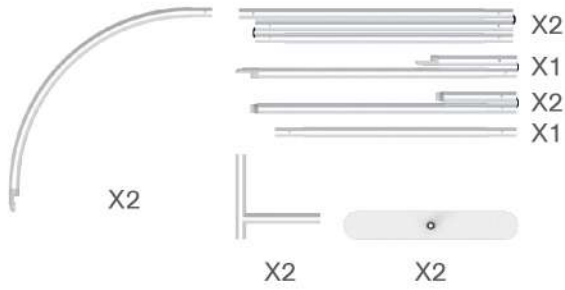
STEP 04

To assemble the stand feet in position



PARTS

(1) Hardware

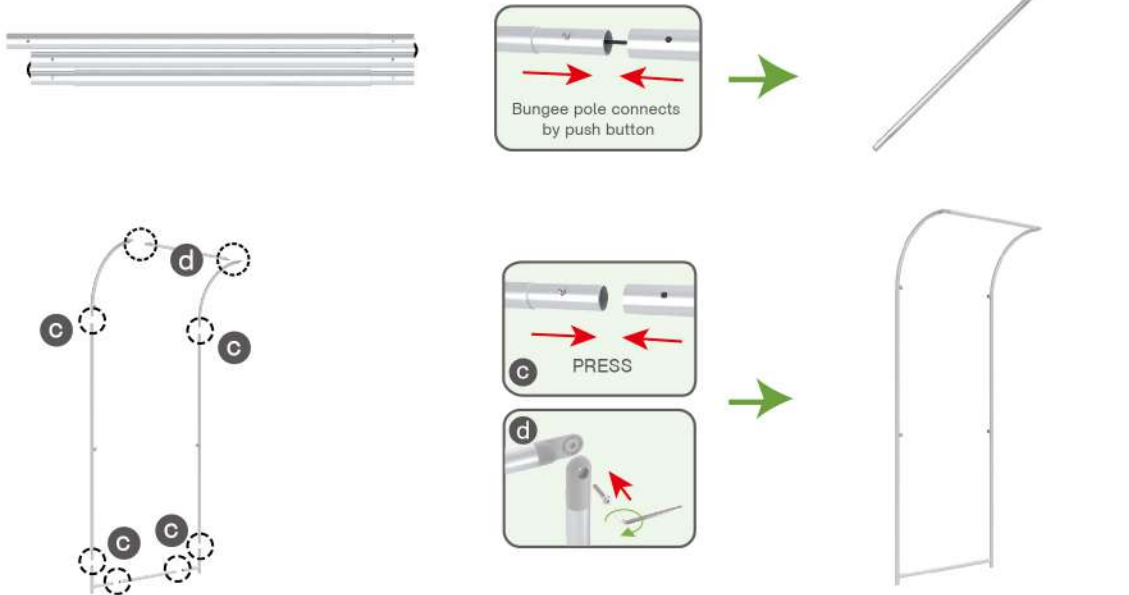


(2) Graphic printing fabric banner



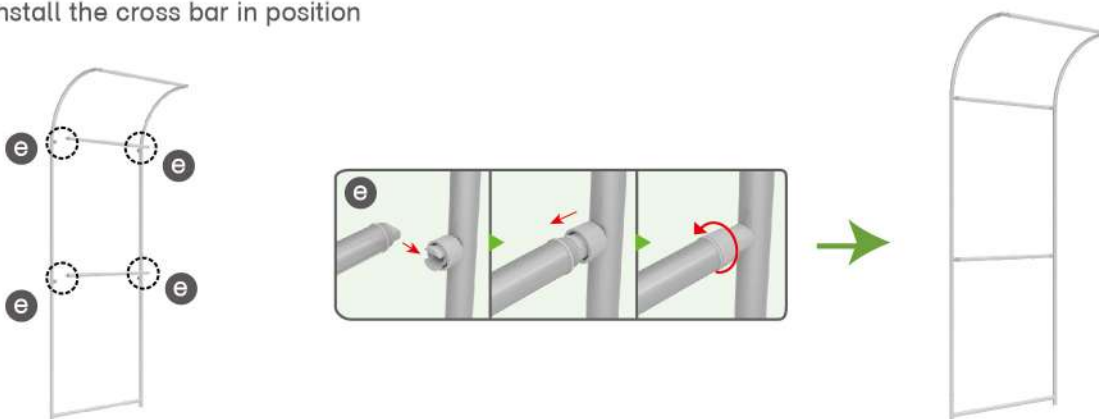
STEP 01

To connect the poles according to the labellings



STEP 02

To install the cross bar in position



PARTS

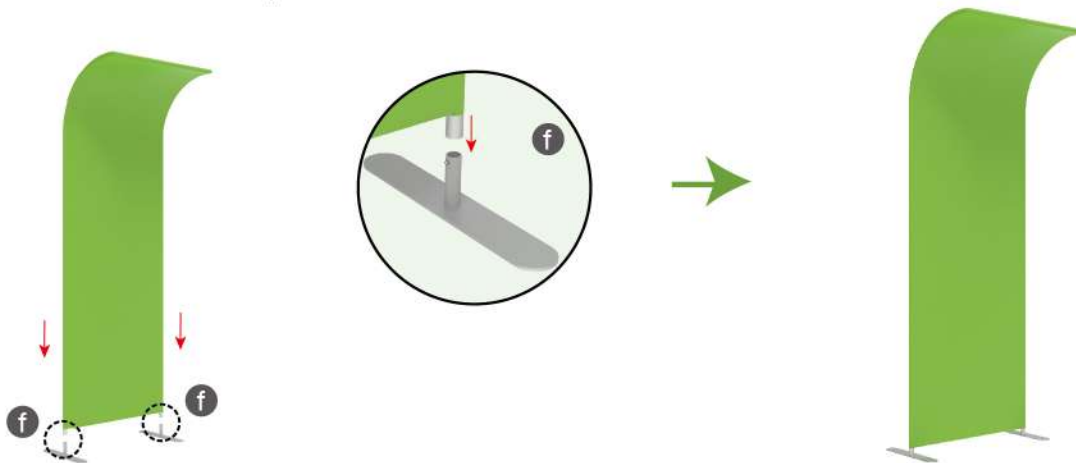
STEP 03

To slide over the fabric banner from top to bottom and zip up



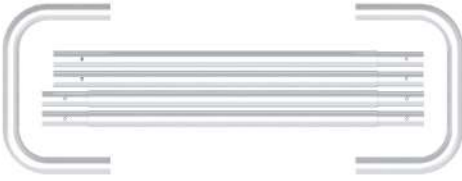
STEP 04

To assemble the stand feet in position



PARTS

(1) Hardware

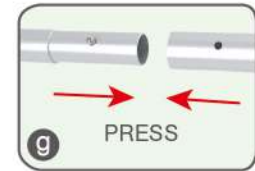
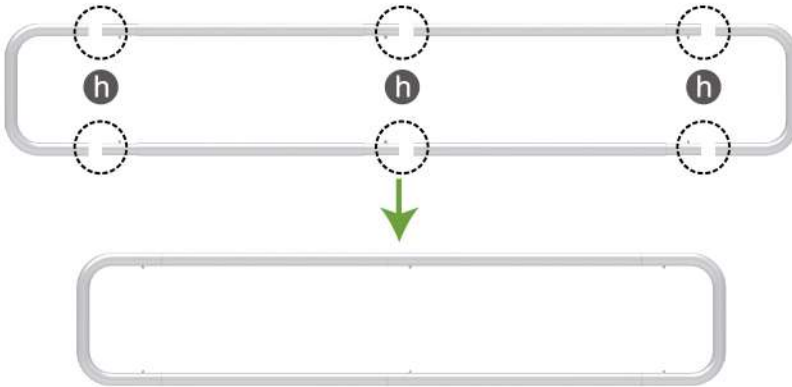


(2) Graphic printing fabric banner



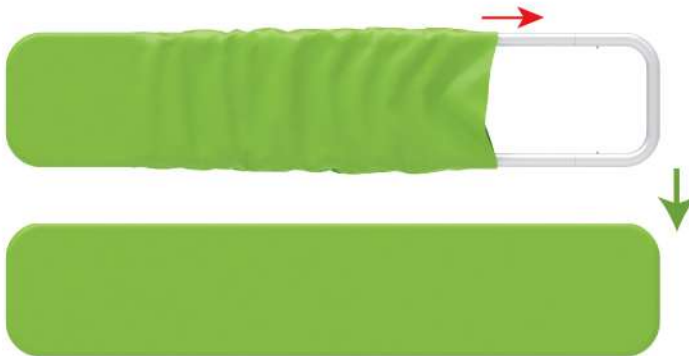
STEP 01

To connect the poles according to the labellings



STEP 02

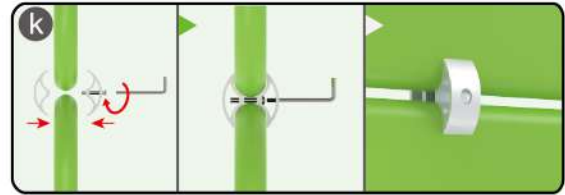
To slide the fabric banner on the frame from side and zip up at side



PARTS

STEP 03

To use C clip to make 2 backwalls connect perfectly



STEP 04

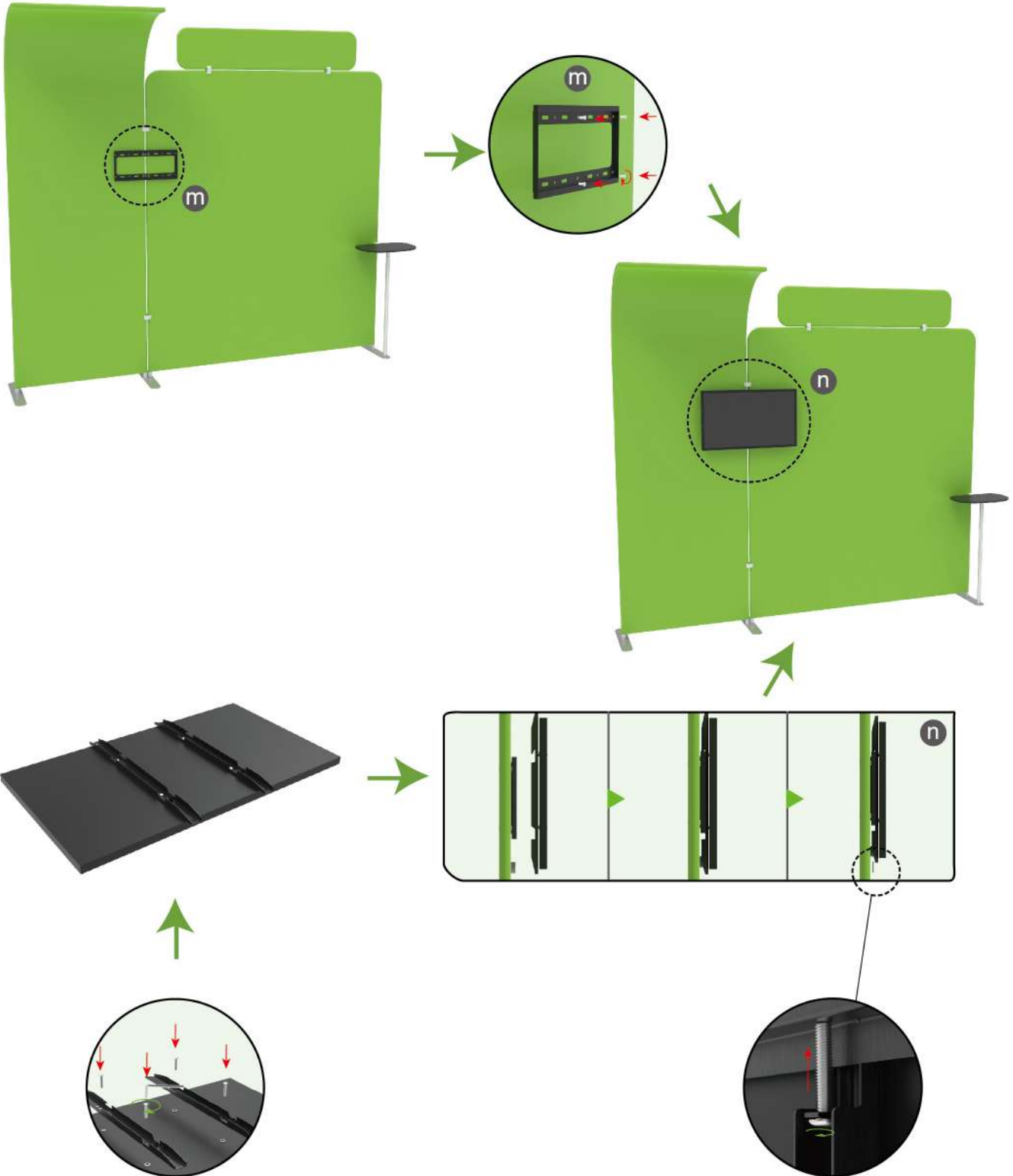
To install the shelf in position



PARTS

STEP 05

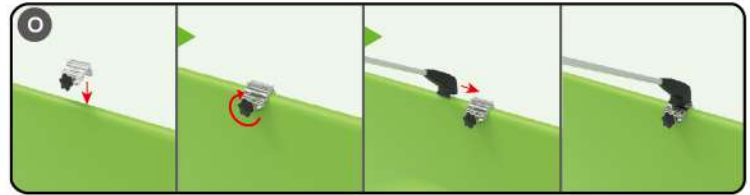
To install the TV mount in position



PARTS

STEP 06

Install LED light



10X10ft-Booth-16